

FERRIS, FLINN & MEDINA, LLC

E N G I N E E R S S U R V E Y O R S

ADDENDUM NO. 1

To: All Planholders
From: Antonio Reyna, PE
Subject: United Irrigation District
FM 676, Inspiration Road to Conway Ave. Pipeline Relocation
Date: April 8, 2024

The Contract Documents & Plans are hereby modified as follows:

CONTRACT DOCUMENTS


I. SECTION 00300 – BID FORM (PROPOSAL):

- Replace the Bid Form documents with the attached Bid Form, Page 00300-2 to 00300-4, Addendum No. 1, dated 4/8/2024.

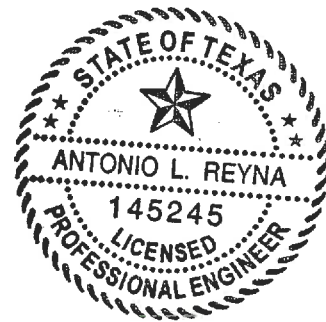
REFER TO CONTRACT PLANS

- I. Replace Plan Sheets 4 through 14 with attached Revised Plan Sheets 4 through 14 dated April 8, 2024.

Addendum No.1 Issued by,
FERRIS, FLINN & MEDINA, LLC
TBPE Firm Reg. No. F-897


Antonio Reyna, PE
Project Engineer

4-8-2024



Attachments:

Addendum No. 1 Section 00300 (Page 00300-2 to 00300-4)
Addendum No. 1 Plan Sheets 4 -14

**UNITED IRRIGATION DISTRICT
PIPELINE RELOCATION QUANTITIES
FM 676, INSPIRATION RD. TO SH 107**

Bid Item No.	Item Code			Description	Units	Approx. Quantity	Unit Price	Total Price
	Item No.	Desc. Code	S.P. No.					
Materials - *Denotes Buy America Materials								
M.1				Furnish 15" Dia. 80 PSI PIP PVC Pipe.	L.F.	128		
M.2				Furnish 18" Dia. 80 PSI PIP PVC Pipe.	L.F.	183		
M.3				Furnish 24" Dia. 80 PSI PIP PVC Pipe.	L.F.	950		
M.4				Furnish 15" Dia. 80 PSI 45 degree PVC Bend.	Ea.	1		
M.5*				Furnish 18" Fresno Series 8200 Fabricated Slide Gate or approved equivalent. BUY AMERICA materials must have an approved Buy American Certificate and a completed TxDOT Form 1818.	Ea.	4		
M.6*				Furnish 24" Fresno Series 8200 Fabricated Slide Gate or approved equivalent. BUY AMERICA materials must have an approved Buy American Certificate and a completed TxDOT Form 1818.	Ea.	6		
M.7*				Install 30" Fresno Series 8200 Fabricated Slide Gate or approved equivalent. BUY AMERICA materials must have an approved Buy American Certificate and a completed TxDOT Form 1818.	Ea.	1		
M.8*				Furnish steel rebar, RCP & grating for each 48" Dia. Irrigation Well. BUY AMERICA materials must have an approved Buy American Certificate and a completed TxDOT Form 1818.	Ea.	7		
M.9*				Furnish steel rebar, RCP & grating for each 60" Dia. Irrigation Well. BUY AMERICA materials must have an approved Buy American Certificate and a completed TxDOT Form 1818.	Ea.	5		
M.10*				Furnish steel rebar, RCP & grating for each 60" Dia. Irrigation Well with a 15' 30" Dia. 100 PSI PVC stubout. BUY AMERICA materials must have an approved Buy American Certificate and a completed TxDOT Form 1818.	Ea.	1		
M.11A*				Furnish 14" Dia. Mud Valve for the outlet valve assembly. BUY AMERICA materials must have an approved Buy American Certificate and a completed TxDOT Form 1818.	Ea.	2		
M.11B*				Furnish rebar for polywell foundation for the outlet valve assembly. BUY AMERICA materials must have an approved Buy American Certificate and a completed TxDOT Form 1818.	Ea.	2		
M.11C				Furnish 15" Dia. 80 PSI PIP PVC Bend, Socket x Gasket, 90 deg. Bend, for the outlet valve assembly.	Ea.	2		

Bid Item No.	Item Code			Description	Units	Approx. Quantity	Unit Price	Total Price
	Item No.	Desc. Code	S.P. No.					
M.11D				Furnish 30" Dia. polywell with 18" Dia. polywell piping for the outlet valve assembly.	Ea.	2		
M.12*				Furnish steel rebar for each 24" concrete collar. BUY AMERICA materials must have an approved Buy American Certificate and a completed TxDOT Form 1818.	Ea.	1		
M.13*				Furnish steel rebar for each 30" concrete collar. BUY AMERICA materials must have an approved Buy American Certificate and a completed TxDOT Form 1818.	Ea.	1		
M.14*				Furnish 24" x 1/2" dia. Epoxy coated steel casing under driveway. BUY AMERICA materials must have an approved Buy American Certificate and a completed TxDOT Form 1818.	L.F.	40		
M.15				Furnish necessary material to complete an Asphalt Driveway Repair.	L.F.	450		
M.16				Furnish pea gravel for 80 PSI PIP PVC pipe bedding.	C.Y.	340		
Construction								
1				Install 15" Dia. 80 PSI PIP PVC Pipe.	L.F.	128		
2				Install 18" Dia. 80 PSI PIP PVC Pipe.	L.F.	183		
3				Install 24" Dia. 80 PSI PIP PVC Pipe.	L.F.	950		
4				Install 15" 45 degree PVC Bend.	Ea.	1		
5				Install 18" Fresno Series 8200 Fabricated Slide Gate or approved equivalent.	Ea.	4		
6				Install 24" Fresno Series 8200 Fabricated Slide Gate or approved equivalent.	Ea.	6		
7				Install 30" Fresno Series 8200 Fabricated Slide Gate or approved equivalent.	Ea.	1		
8				Construction of 48" Dia. Irrigation Well including rebar, materials, and equipment to perform excavation, forming, reinforcing steel, waterstop, backfill, installation of grating, and any other incidentals necessary.	Ea.	7		
9				Construction of 60" Dia. Irrigation Well including rebar, materials, and equipment to perform excavation, forming, reinforcing steel, waterstop, backfill, installation of grating, and any other incidentals necessary.	Ea.	5		
10				Construction of 60" Dia. Irrigation Well with 15' 30" dia., 100 PSI PVC stubout, including rebar, materials, and equipment to perform excavation, forming, reinforcing steel, waterstop, backfill, installation of grating, and any other incidentals necessary.	Ea.	1		

Bid Item No.	Item Code			Description	Units	Approx. Quantity	Unit Price	Total Price	
	Item No.	Desc. Code	S.P. No.						
11				Construction of 14" Outlet Valve Assembly including 14" mud valve, 30" dia. poly well, 90 deg. bend, rebar, and other materials to complete in place, and equipment to perform excavation, forming, reinforcing steel, waterstop, backfill and any other incidentals necessary.	Ea.	2			
12				Construction of 24" concrete collar including excavation, forming, reinforcing steel, waterstop, backfill, and any other incidentals.	Ea.	1			
13				Construction of 30" concrete collar including excavation, forming, reinforcing steel, waterstop, backfill, and any other incidentals.	Ea.	1			
14				Install 24" x 1/2" dia. Epoxy coated steel casing under driveway by dry bore from Sta. 169+43 to Sta. 169+83, including casing spacers, end seals, dewatering, and any other incidentals required.	L.F.	40			
15				Repair of Asphalt drive, 2" HMAc Pavement & 8" caliche compacted to 95% standard proctor density.	L.F.	450			
16				Pea gravel for 80 PSI PIP PVC pipe bedding.	C.Y.	340			
17				Removal of existing standpipes and compaction of backfill to 95% standard proctor density.	Ea.	9			
18				Removal of existing irrigation pipeline and compaction of backfill to 95% standard proctor density.	L.F.	1,869			
19	402	6001		Trench Safety	L.F.	1,266			
TOTAL BID AMOUNT									

**UNITED IRRIGATION DISTRICT
PIPELINE RELOCATION QUANTITIES
FM 676, INSPIRATION RD. TO SH 107**

QUANTITY TABLE

Bid Item No.	Item Code			Description	Units	Approx. Quantity
	Item No.	Desc. Code	S.P. No.			
Materials - *Denotes Buy America Materials						
M.1				Furnish 15" Dia. 80 PSI PIP PVC Pipe.	L.F.	128
M.2				Furnish 18" Dia. 80 PSI PIP PVC Pipe.	L.F.	183
M.3				Furnish 24" Dia. 80 PSI PIP PVC Pipe.	L.F.	950
M.4				Furnish 15" Dia. 80 PSI 45 degree PVC Bend.	Ea.	1
M.5*				Furnish 18" Fresno Series 8200 Fabricated Slide Gate or approved equivalent. BUY AMERICA materials must have an approved Buy American Certificate and a completed TxDOT Form 1818.	Ea.	4
M.6*				Furnish 24" Fresno Series 8200 Fabricated Slide Gate or approved equivalent. BUY AMERICA materials must have an approved Buy American Certificate and a completed TxDOT Form 1818.	Ea.	6
M.7*				Install 30" Fresno Series 8200 Fabricated Slide Gate or approved equivalent. BUY AMERICA materials must have an approved Buy American Certificate and a completed TxDOT Form 1818.	Ea.	1
M.8*				Furnish steel rebar, RCP & grating for each 48" Dia. Irrigation Well. BUY AMERICA materials must have an approved Buy American Certificate and a completed TxDOT Form 1818.	Ea.	7
M.9*				Furnish steel rebar, RCP & grating for each 60" Dia. Irrigation Well. BUY AMERICA materials must have an approved Buy American Certificate and a completed TxDOT Form 1818.	Ea.	5
M.10*				Furnish steel rebar, RCP & grating for each 60" Dia. Irrigation Well with a 15' 30" Dia. 100 PSI PVC stubout. BUY AMERICA materials must have an approved Buy American Certificate and a completed TxDOT Form 1818.	Ea.	1
M.11A*				Furnish 14" Dia. Mud Valve for the outlet valve assembly. BUY AMERICA materials must have an approved Buy American Certificate and a completed TxDOT Form 1818.	Ea.	2
M.11B*				Furnish rebar for polywell foundation for the outlet valve assembly. BUY AMERICA materials must have an approved Buy American Certificate and a completed TxDOT Form 1818.	Ea.	2
M.11C				Furnish 15" Dia. 80 PSI PIP PVC Bend, Socket x Gasket, 90 deg. Bend, for the outlet valve assembly.	Ea.	2
M.11D				Furnish 30" Dia. polywell with 18" Dia. polywell piping for the outlet valve assembly.	Ea.	2
M.12*				Furnish steel rebar for each 24" concrete collar. BUY AMERICA materials must have an approved Buy American Certificate and a completed TxDOT Form 1818.	Ea.	1
M.13*				Furnish steel rebar for each 30" concrete collar. BUY AMERICA materials must have an approved Buy American Certificate and a completed TxDOT Form 1818.	Ea.	1
M.14*				Furnish 24" x 1/2" dia. Epoxy coated steel casing under driveway. BUY AMERICA materials must have an approved Buy American Certificate and a completed TxDOT Form 1818.	L.F.	40
M.15				Furnish necessary material to complete an Asphalt Driveway Repair.	L.F.	450
M.16				Furnish pea gravel for 80 PSI PIP PVC pipe bedding.	C.Y.	340

ADDENDUM NO. 1



FERRIS, FLINN & MEDINA, LLC
ENGINEERS SURVEYORS
1405 N. STUART PLACE ROAD
HARLINGEN, TEXAS 79502
PHONE (361) 364-2236 FAX (361) 364-1029
TEXAS BOARD OF PROFESSIONAL LAND SURVEYORS TEXAS BOARD OF PROFESSIONAL ENGINEERS
P.L.S. REGISTRATION NO. 3302700 P.E. REGISTRATION NO. 14861

UNITED IRRIGATION DISTRICT

FM 676 (MILE 5)
INSPIRATION ROAD TO SH107
QUANTITY TABLE

SCALE:		SHEET 04 OF 20		
DN:		CONT	SECT	HIGHWAY
CK DN:		---	---	FM 676
DW:				
CK DW:		DIST	COUNTY	SHEET NO.
TR:		PHR	HIDALGO	
CK TR:				

**UNITED IRRIGATION DISTRICT
PIPELINE RELOCATION QUANTITIES
FM 676, INSPIRATION RD. TO SH 107**

QUANTITY TABLE

Bid Item No.	Item Code			Description	Units	Approx. Quantity
	Item No.	Desc. Code	S.P. No.			
Construction						
1				Install 15" Dia. 80 PSI PIP PVC Pipe.	L.F.	128
2				Install 18" Dia. 80 PSI PIP PVC Pipe.	L.F.	183
3				Install 24" Dia. 80 PSI PIP PVC Pipe.	L.F.	950
4				Install 15" 45 degree PVC Bend.	Ea.	1
5				Install 18" Fresno Series 8200 Fabricated Slide Gate or approved equivalent.	Ea.	4
6				Install 24" Fresno Series 8200 Fabricated Slide Gate or approved equivalent.	Ea.	6
7				Install 30" Fresno Series 8200 Fabricated Slide Gate or approved equivalent.	Ea.	1
8				Construction of 48" Dia. Irrigation Well including rebar, materials, and equipment to perform excavation, forming, reinforcing steel, waterstop, backfill, installation of grating, and any other incidentals necessary.	Ea.	7
9				Construction of 60" Dia. Irrigation Well including rebar, materials, and equipment to perform excavation, forming, reinforcing steel, waterstop, backfill, installation of grating, and any other incidentals necessary.	Ea.	5
10				Construction of 60" Dia. Irrigation Well with 15' 30" dia., 100 PSI PVC stubout, including rebar, materials, and equipment to perform excavation, forming, reinforcing steel, waterstop, backfill, installation of grating, and any other incidentals necessary.	Ea.	1
11				Construction of 14" Outlet Valve Assembly including 14" mud valve, 30" dia. poly well, 90 deg. bend, rebar, and other materials to complete in place, and equipment to perform excavation, forming, reinforcing steel, waterstop, backfill and any other incidentals necessary.	Ea.	2
12				Construction of 24" concrete collar including excavation, forming, reinforcing steel, waterstop, backfill, and any other incidentals.	Ea.	1
13				Construction of 30" concrete collar including excavation, forming, reinforcing steel, waterstop, backfill, and any other incidentals.	Ea.	1
14				Install 24" x 1/2" dia. Epoxy coated steel casing under driveway by dry bore from Sta. 169+43 to Sta. 169+83, including casing spacers, end seals, dewatering, and any other incidentals required.	L.F.	40
15				Repair of Asphalt drive, 2" HMAC Pavement & 8" caliche compacted to 95% standard proctor density.	L.F.	450
16				Pea gravel for 80 PSI PIP PVC pipe bedding.	C.Y.	340
17				Removal of existing standpipes and compaction of backfill to 95% standard proctor density.	Ea.	9
18				Removal of existing irrigation pipeline and compaction of backfill to 95% standard proctor density.	L.F.	1,869
19	402	6001		Trench Safety	L.F.	1,266

APPENDUM NO. 1



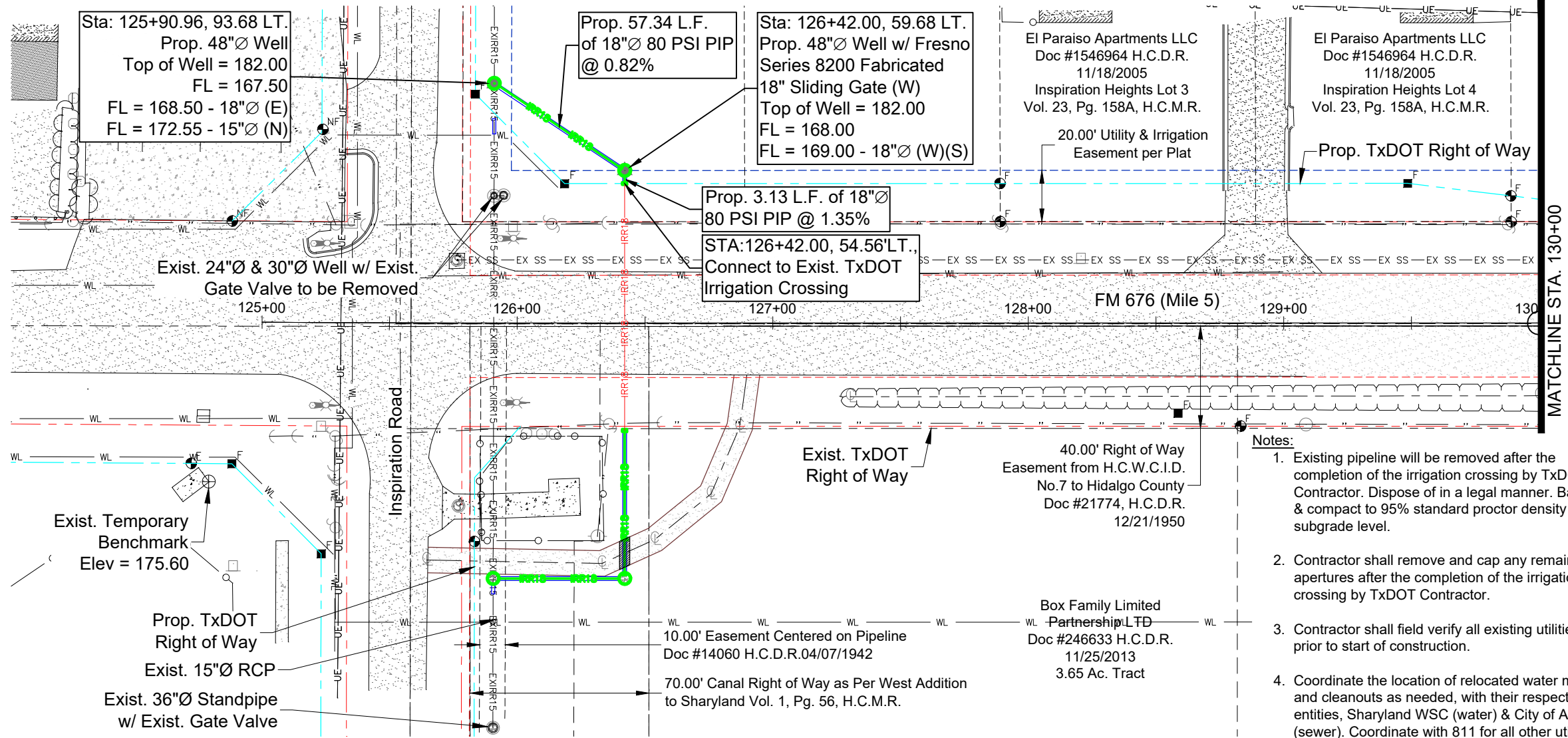
FERRIS, FLINN & MEDINA, LLC
ENGINEERS SURVEYORS
1405 N. STUART PLACE ROAD
HARLINGEN, TEXAS 77552
PHONE (361) 364-2236 FAX (361) 364-1029
TEXAS BOARD OF PROFESSIONAL LAND SURVEYORS TEXAS BOARD OF PROFESSIONAL ENGINEERS
P.L.S. REGISTRATION NO. 1002526 P.E. REGISTRATION NO. 1488

UNITED IRRIGATION DISTRICT

FM 676 (MILE 5)
INSPIRATION ROAD TO SH107
QUANTITY TABLE

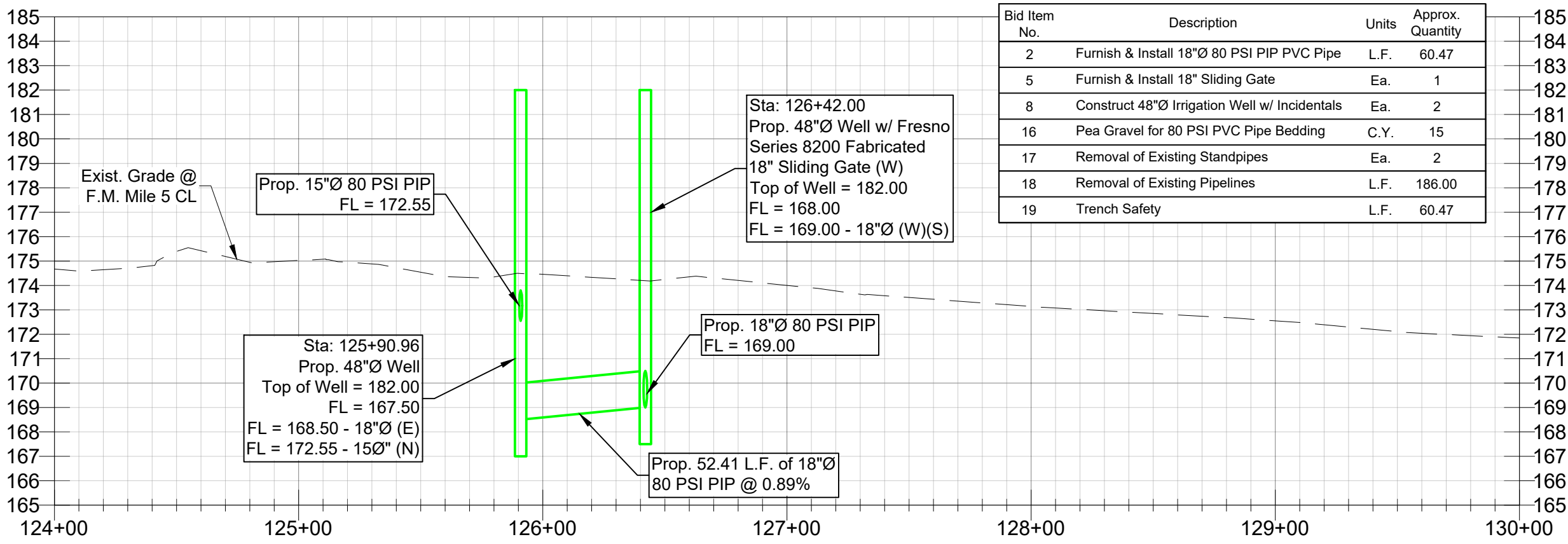
SCALE:		SHEET 05 OF 20			
DN:		CONT	SECT	JOB	HIGHWAY
CK DN:		---	---		FM 676
DW:					
CK DW:		DIST	COUNTY		SHEET NO.
TR:		PHR	HIDALGO		
CK TR:					

F:\0202 UID\202-058 FM 676 (Mile 5) Inspiration Rd to SH107 DWG\202-058 TXDOT.dwg, 06-14-18



LEGEND	
	TEMPORARY BENCHMARK
	CONCRETE MONUMENT FOUND
	X MARK FOUND
	IRON ROD FOUND
	NAIL FOUND
	PIPE FOUND
	POST
	POWER POLE
	ANCHOR POLE
	SIGN
	IRRIGATION WELL
	MANHOLE
	TRAFFIC LIGHT
	SECURITY LIGHT POST
	STREET LIGHT POST
	CURB INLET
	GRATE INLET
	EXIST. TOP OF BANK
	EXIST. OVERHEAD POWER LINE
	EXIST. FENCE
	EXIST. UNDERGROUND ELECTRIC CABLE
	EXIST. FIBER OPTIC CABLE
	EXIST. SANITARY SEWER
	EXIST. STORM DRAIN
	S.W.S.C. WATERLINE
	EXIST. 15" IRRIGATION LINE
	EXIST. 24" IRRIGATION LINE
	PROP. 18" IRRIGATION LINE BY U.I.D.
	PROP. 24" IRRIGATION LINE BY U.I.D.
	PROP. 24" IRRIGATION LINE BY TXDOT
	EXIST. ROAD EASEMENT
	EXIST. TXDOT RIGHT OF WAY
	PROP. TXDOT RIGHT OF WAY

- Notes:**
- Existing pipeline will be removed after the completion of the irrigation crossing by TxDOT Contractor. Dispose of in a legal manner. Backfill & compact to 95% standard proctor density up to subgrade level.
 - Contractor shall remove and cap any remaining apertures after the completion of the irrigation crossing by TxDOT Contractor.
 - Contractor shall field verify all existing utilities prior to start of construction.
 - Coordinate the location of relocated water meters and cleanouts as needed, with their respected entities, Sharyland WSC (water) & City of Alton (sewer). Coordinate with 811 for all other utilities.



Bid Item No.	Description	Units	Approx. Quantity
2	Furnish & Install 18"Ø 80 PSI PIP PVC Pipe	L.F.	60.47
5	Furnish & Install 18" Sliding Gate	Ea.	1
8	Construct 48"Ø Irrigation Well w/ Incidentals	Ea.	2
16	Pea Gravel for 80 PSI PVC Pipe Bedding	C.Y.	15
17	Removal of Existing Standpipes	Ea.	2
18	Removal of Existing Pipelines	L.F.	186.00
19	Trench Safety	L.F.	60.47

APPENDUM NO. 1

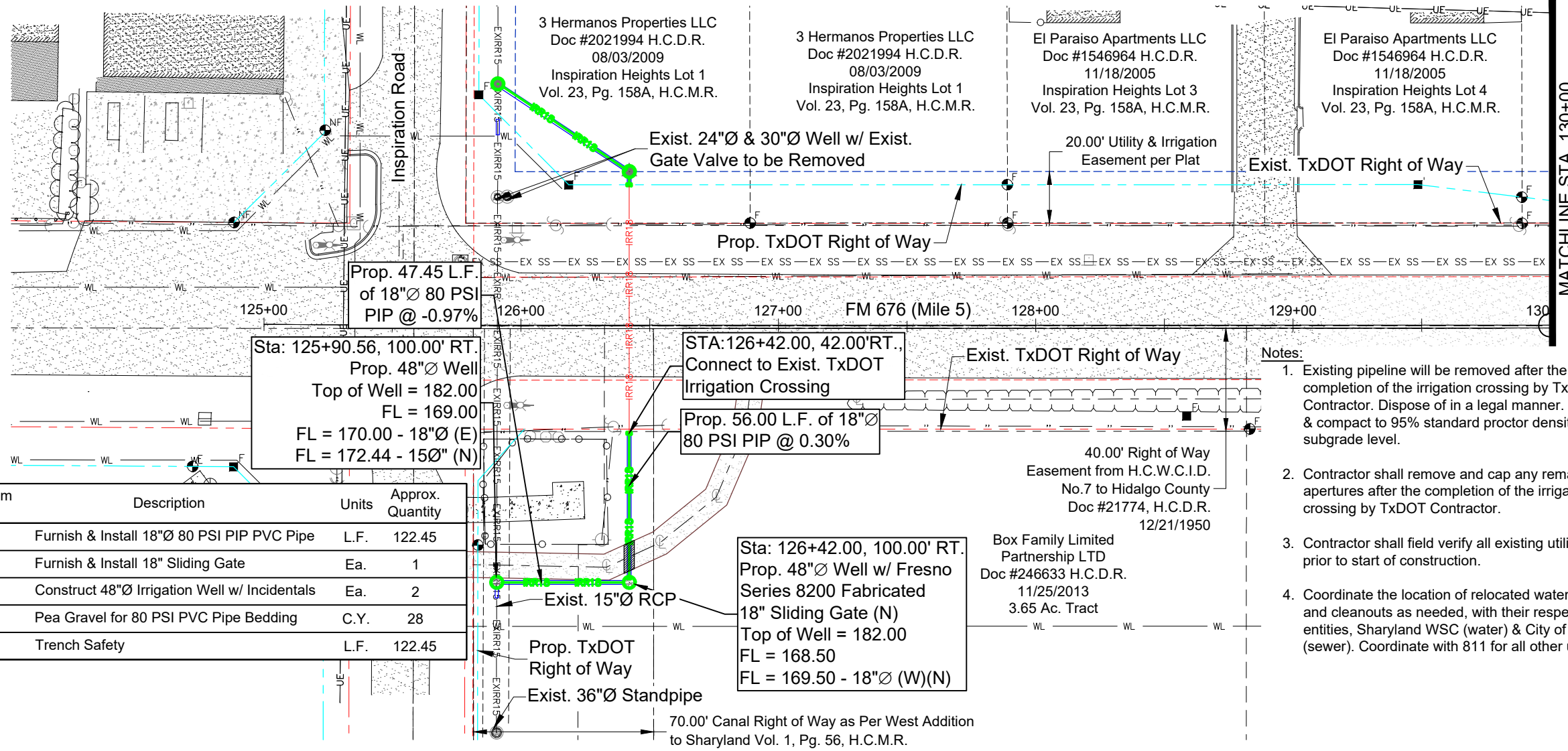


SCALE
 HORIZONTAL: 1"=50'
 VERTICAL: 1"=5'
FERRIS, FLINN & MEDINA, LLC
 ENGINEERS SURVEYORS
 1405 N. STUART PLACE ROAD
 HARLINGEN, TEXAS 79532
PHONE: (361) 294-2200 FAX: (361) 294-1023
 TEXAS BOARD OF PROFESSIONAL LAND SURVEYORS TEXAS BOARD OF PROFESSIONAL ENGINEERS
 FIRM REGISTRATION NO. 13202002 FIRM REGISTRATION NO. 1485

UNITED IRRIGATION DISTRICT
 FM 676 (MILE 5)
 INSPIRATION ROAD TO SH107
 IRRIGATION PLAN & PROFILE LT.
 STA. 124+00 TO STA. 130+00

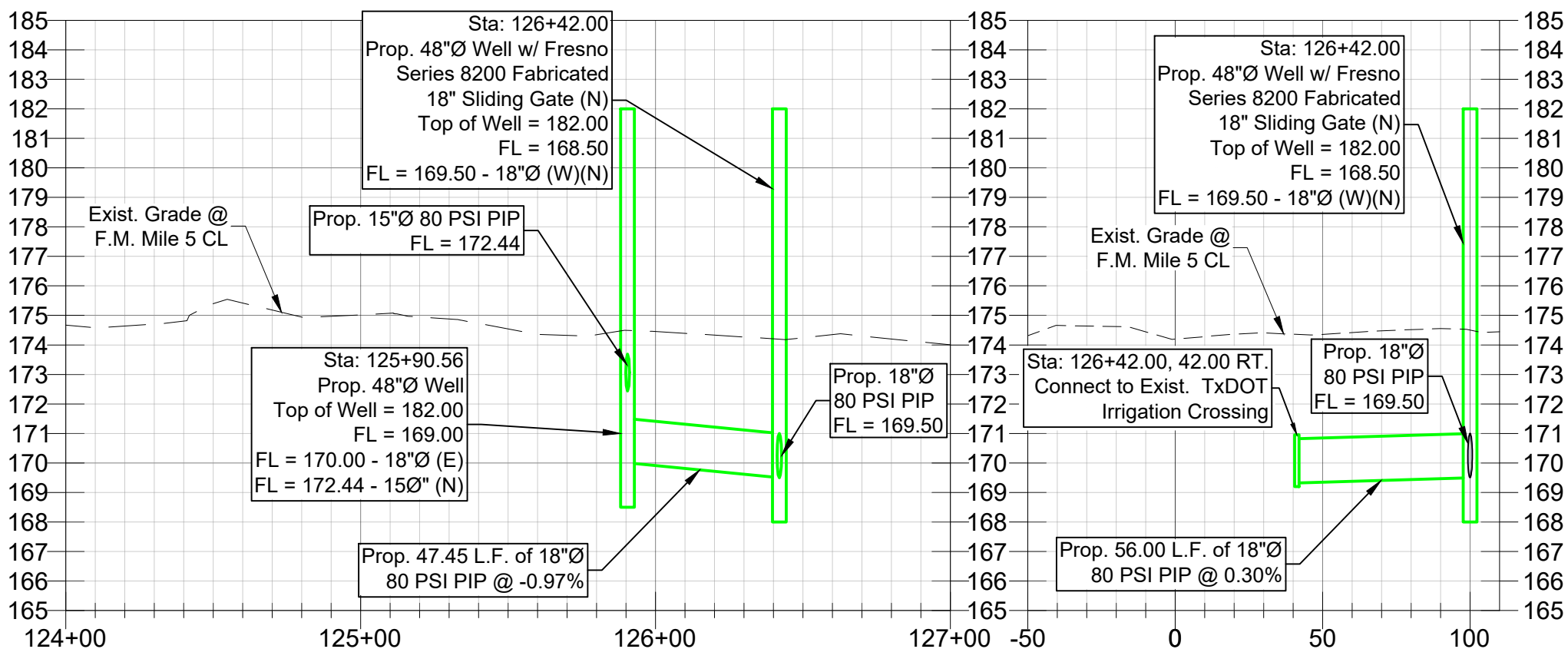
SCALE: 1" = 50'		SHEET 06 OF 20	
DN:	CONT	SECT	JOB
CK DN:	---	---	---
DW:			FM 676
CK DW:			
TR:	DIST	COUNTY	SHEET NO.
CK TR:	PHR	HIDALGO	

F:\0202 UID\202-058 FM 676 (Mile 5) Inspiration Rd to SH107\DWG\202-058 TXDOT.dwg, 06-14-18 P&P



Bid Item No.	Description	Units	Approx. Quantity
2	Furnish & Install 18"Ø 80 PSI PIP PVC Pipe	L.F.	122.45
5	Furnish & Install 18" Sliding Gate	Ea.	1
8	Construct 48"Ø Irrigation Well w/ Incidentals	Ea.	2
16	Pea Gravel for 80 PSI PVC Pipe Bedding	C.Y.	28
19	Trench Safety	L.F.	122.45

- Notes:**
- Existing pipeline will be removed after the completion of the irrigation crossing by TxDOT Contractor. Dispose of in a legal manner. Backfill & compact to 95% standard proctor density up to subgrade level.
 - Contractor shall remove and cap any remaining apertures after the completion of the irrigation crossing by TxDOT Contractor.
 - Contractor shall field verify all existing utilities prior to start of construction.
 - Coordinate the location of relocated water meters and cleanouts as needed, with their respected entities, Sharyland WSC (water) & City of Alton (sewer). Coordinate with 811 for all other utilities.



LEGEND

- ⊕ TEMPORARY BENCHMARK
- ⊕ CONCRETE MONUMENT FOUND
- ⊕ X MARK FOUND
- ⊕ IRON ROD FOUND
- ⊕ NAIL FOUND
- ⊕ PIPE FOUND
- ⊕ POST
- ⊕ POWER POLE
- ⊕ ANCHOR POLE
- ⊕ SIGN
- ⊕ IRRIGATION WELL
- ⊕ MANHOLE
- ⊕ TRAFFIC LIGHT
- ⊕ SECURITY LIGHT POST
- ⊕ STREET LIGHT POST
- ⊕ CURB INLET
- ⊕ GRATE INLET
- EXIST. TOP OF BANK
- EXIST. OVERHEAD POWER LINE
- EXIST. FENCE
- UE EXIST. UNDERGROUND ELECTRIC CABLE
- FOC EXIST. FIBER OPTIC CABLE
- EX SS EXIST. SANITARY SEWER
- SD-EX EXIST. STORM DRAIN
- WL S.W.S.C. WATERLINE
- EXIRR15 EXIST. 15" IRRIGATION LINE
- EX-IRR24 EXIST. 24" IRRIGATION LINE
- IRR18 PROP. 18" IRRIGATION LINE BY U.I.D.
- IRR24 PROP. 24" IRRIGATION LINE BY U.I.D.
- IRR24 PROP. 24" IRRIGATION LINE BY TXDOT
- EXIST. ROAD EASEMENT
- EXIST. TxDOT RIGHT OF WAY
- PROP. TxDOT RIGHT OF WAY

ADDENDUM NO. 1

ANTONIO L. REYNA
145245
LICENSED PROFESSIONAL ENGINEER

Antonio Reyna
4-8-2024

SCALE
HORIZONTAL: 1"=50'
VERTICAL: 1"=5'

FERRIS, FLINN & MEDINA, LLC
ENGINEERS SURVEYORS
1405 N. STUART PLACE ROAD
HARLINGEN, TEXAS 77552
PHONE: (361) 274-2200 FAX: (361) 274-1023
TEXAS BOARD OF PROFESSIONAL LAND SURVEYORS TEXAS BOARD OF PROFESSIONAL ENGINEERS
P.L.S. REGISTRATION NO. 1520208 P.E. REGISTRATION NO. 14881

UNITED IRRIGATION DISTRICT

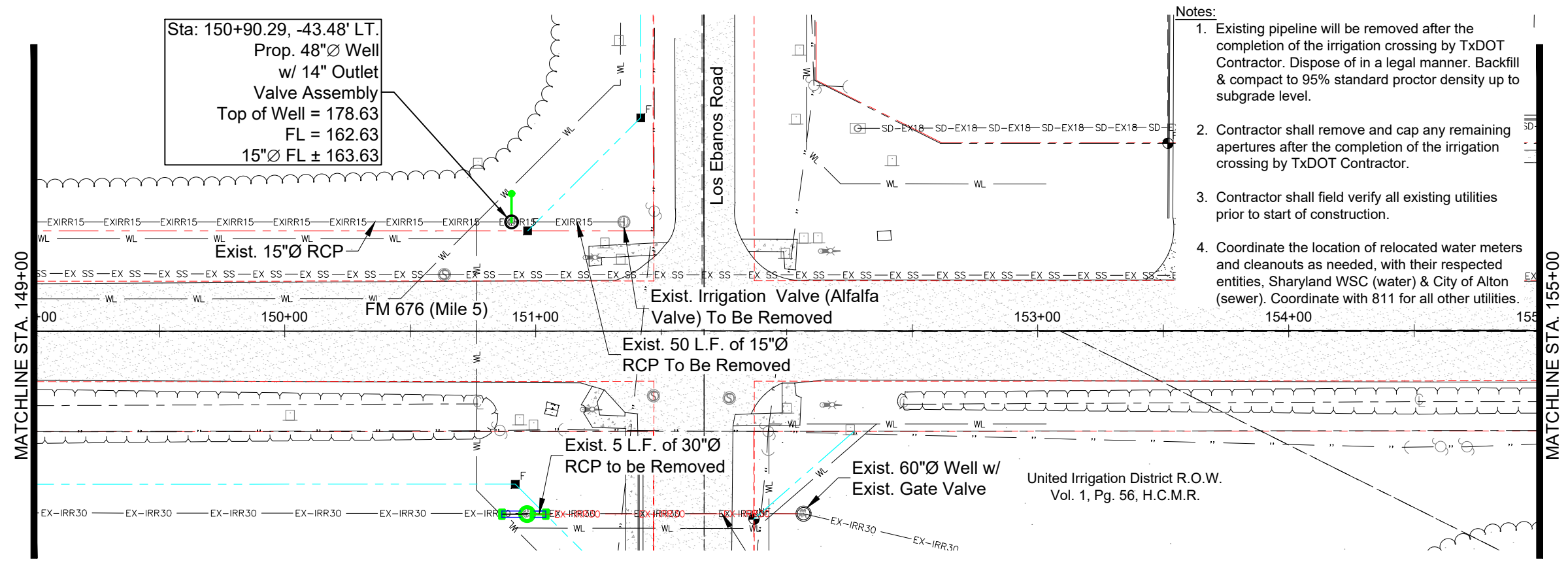
FM 676 (MILE 5)
INSPIRATION ROAD TO SH107
IRRIGATION PLAN & PROFILE RT.
STA. 124+00 TO STA. 130+00

SCALE: 1" = 50'		SHEET 07 OF 20	
DN:	CONT	SECT	JOB
CK DN:	---	---	FM 676
DW:			
CK DW:	DIST	COUNTY	SHEET NO.
TR:	PHR	HIDALGO	
CK TR:			

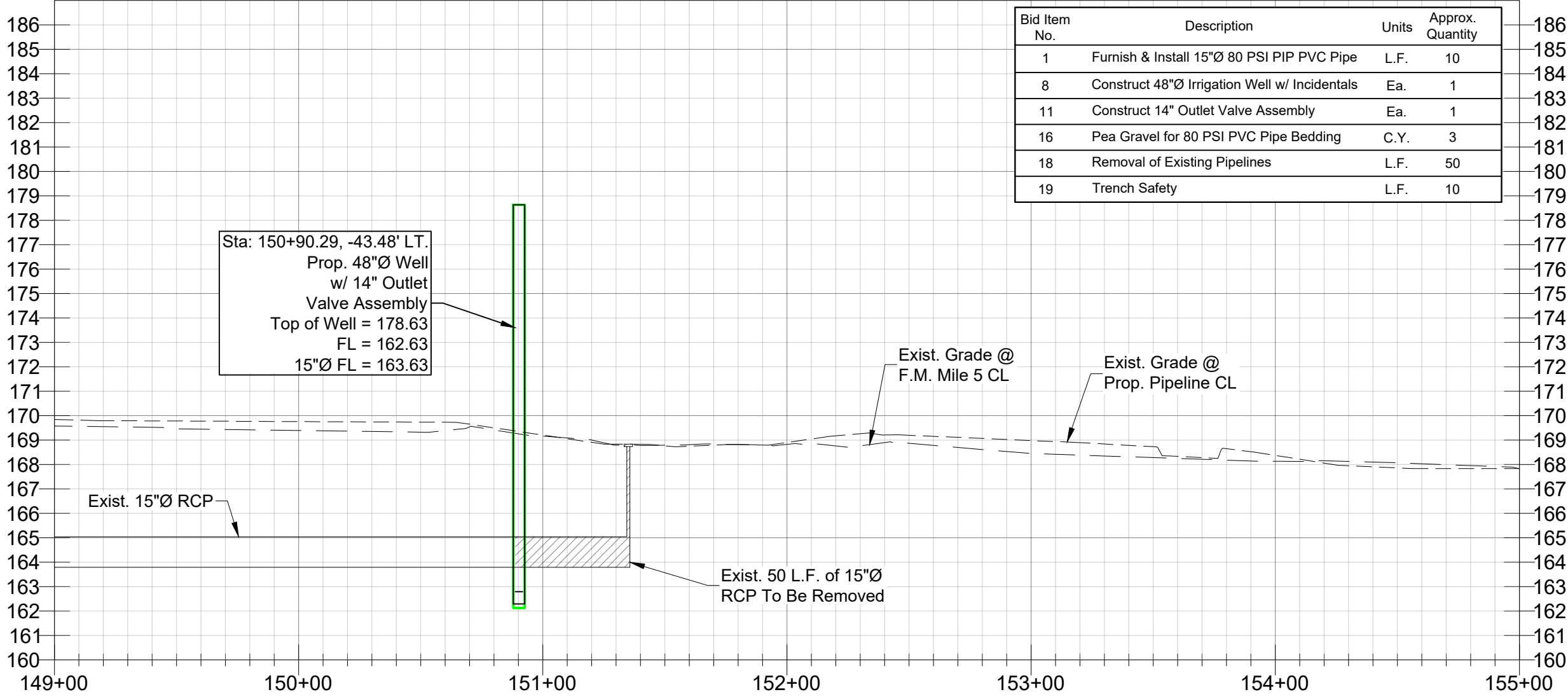
Sta: 150+90.29, -43.48' LT.
 Prop. 48"Ø Well
 w/ 14" Outlet
 Valve Assembly
 Top of Well = 178.63
 FL = 162.63
 15"Ø FL ± 163.63

- Notes:**
- Existing pipeline will be removed after the completion of the irrigation crossing by TxDOT Contractor. Dispose of in a legal manner. Backfill & compact to 95% standard proctor density up to subgrade level.
 - Contractor shall remove and cap any remaining apertures after the completion of the irrigation crossing by TxDOT Contractor.
 - Contractor shall field verify all existing utilities prior to start of construction.
 - Coordinate the location of relocated water meters and cleanouts as needed, with their respected entities, Sharyland WSC (water) & City of Alton (sewer). Coordinate with 811 for all other utilities.

- LEGEND**
- TEMPORARY BENCHMARK
 - CONCRETE MONUMENT FOUND
 - X MARK FOUND
 - IRON ROD FOUND
 - NAIL FOUND
 - PIPE FOUND
 - POST
 - POWER POLE
 - ANCHOR POLE
 - SIGN
 - IRRIGATION WELL
 - MANHOLE
 - TRAFFIC LIGHT
 - SECURITY LIGHT POST
 - STREET LIGHT POST
 - CURB INLET
 - GRATE INLET
 - EXIST. TOP OF BANK
 - EXIST. OVERHEAD POWER LINE
 - EXIST. FENCE
 - UE— EXIST. UNDERGROUND ELECTRIC CABLE
 - FOC— EXIST. FIBER OPTIC CABLE
 - EX SS— EXIST. SANITARY SEWER
 - SD-EX— EXIST. STORM DRAIN
 - WL— S.W.S.C. WATERLINE
 - EXIRR15— EXIST. 15" IRRIGATION LINE
 - EX-IRR30— EXIST. 30" IRRIGATION LINE
 - IRR15— PROP. 15" IRRIGATION LINE BY U.I.D.
 - IRR24— PROP. 24" IRRIGATION LINE BY U.I.D.
 - IRR24— PROP. 24" IRRIGATION LINE BY TXDOT
 - EXIST. ROAD EASEMENT
 - EXIST. TXDOT RIGHT OF WAY
 - PROP. TXDOT RIGHT OF WAY



Bid Item No.	Description	Units	Approx. Quantity
1	Furnish & Install 15"Ø 80 PSI PIP PVC Pipe	L.F.	10
8	Construct 48"Ø Irrigation Well w/ Incidentals	Ea.	1
11	Construct 14" Outlet Valve Assembly	Ea.	1
16	Pea Gravel for 80 PSI PVC Pipe Bedding	C.Y.	3
18	Removal of Existing Pipelines	L.F.	50
19	Trench Safety	L.F.	10



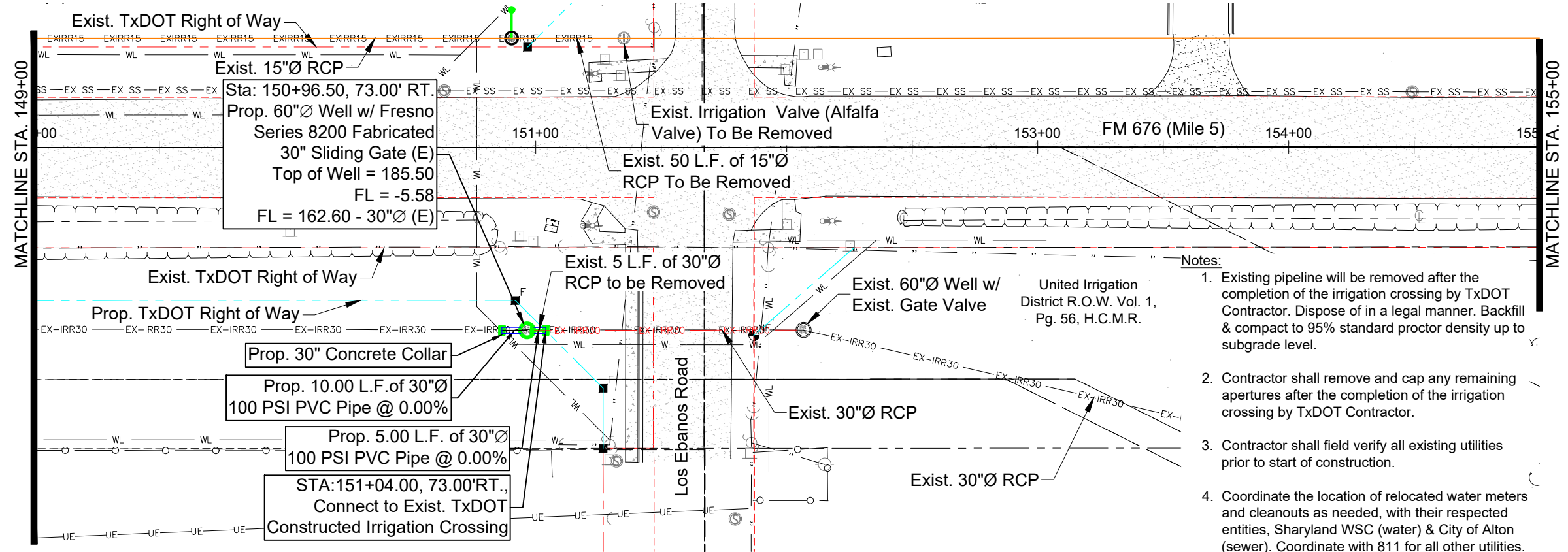
SCALE
 HORIZONTAL: 1"=50'
 VERTICAL: 1"=5'
FERRIS, FLINN & MEDINA, LLC
 ENGINEERS SURVEYORS
 1405 N. STUART PLACE ROAD
 HARLINGEN, TEXAS 79502
PHONE (361) 364-2236 FAX (361) 364-1023
 TEXAS BOARD OF PROFESSIONAL LAND SURVEYORS TEXAS BOARD OF PROFESSIONAL ENGINEERS
 FIRM REGISTRATION NO. 1520702 FIRM REGISTRATION NO. 1480

UNITED IRRIGATION DISTRICT
 FM 676 (MILE 5)
 INSPIRATION ROAD TO SH107
 IRRIGATION PLAN & PROFILE LT.
 STA. 149+00 TO STA. 155+00

SCALE: 1" = 50'		SHEET 08 OF 20	
DN:	CONT	SECT	JOB
CK DN:	---	---	---
DW:			FM 676
CK DW:			
TR:	DIST	COUNTY	SHEET NO.
CK TR:	PHR	HIDALGO	

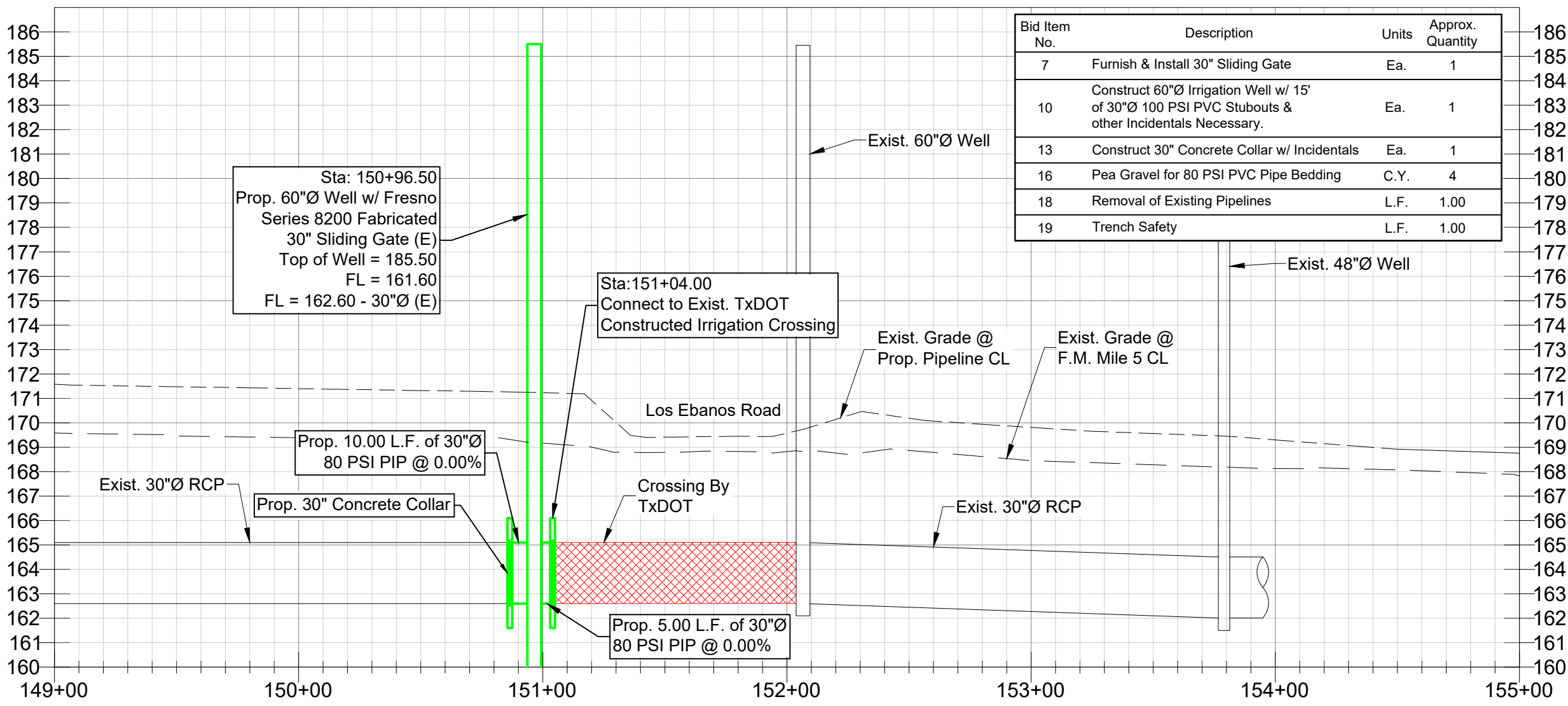
LEGEND

- TEMPORARY BENCHMARK
- CONCRETE MONUMENT FOUND
- X MARK FOUND
- IRON ROD FOUND
- NAIL FOUND
- PIPE FOUND
- POST
- POWER POLE
- ANCHOR POLE
- SIGN
- IRRIGATION WELL
- MANHOLE
- TRAFFIC LIGHT
- SECURITY LIGHT POST
- STREET LIGHT POST
- CURB INLET
- GRATE INLET
- EXIST. TOP OF BANK
- EXIST. OVERHEAD POWER LINE
- EXIST. FENCE
- EXIST. UNDERGROUND ELECTRIC CABLE
- EXIST. FIBER OPTIC CABLE
- EXIST. SANITARY SEWER
- EXIST. STORM DRAIN
- S.W.S.C. WATERLINE
- EXIST. 15" IRRIGATION LINE
- EXIST. 30" IRRIGATION LINE
- PROP. 15" IRRIGATION LINE BY U.I.D.
- PROP. 24" IRRIGATION LINE BY U.I.D.
- PROP. 24" IRRIGATION LINE BY TXDOT
- EXIST. ROAD EASEMENT
- EXIST. TxDOT RIGHT OF WAY
- PROP. TxDOT RIGHT OF WAY



- Notes:**
1. Existing pipeline will be removed after the completion of the irrigation crossing by TxDOT Contractor. Dispose of in a legal manner. Backfill & compact to 95% standard proctor density up to subgrade level.
 2. Contractor shall remove and cap any remaining apertures after the completion of the irrigation crossing by TxDOT Contractor.
 3. Contractor shall field verify all existing utilities prior to start of construction.
 4. Coordinate the location of relocated water meters and cleanouts as needed, with their respected entities, Sharyland WSC (water) & City of Alton (sewer). Coordinate with 811 for all other utilities.

Bid Item No.	Description	Units	Approx. Quantity
7	Furnish & Install 30" Sliding Gate	Ea.	1
10	Construct 60" Irrigation Well w/ 15' of 30" 100 PSI PVC Stubouts & other Incidentals Necessary.	Ea.	1
13	Construct 30" Concrete Collar w/ Incidentals	Ea.	1
16	Pea Gravel for 80 PSI PVC Pipe Bedding	C.Y.	4
18	Removal of Existing Pipelines	L.F.	1.00
19	Trench Safety	L.F.	1.00



APPENDUM NO. 1



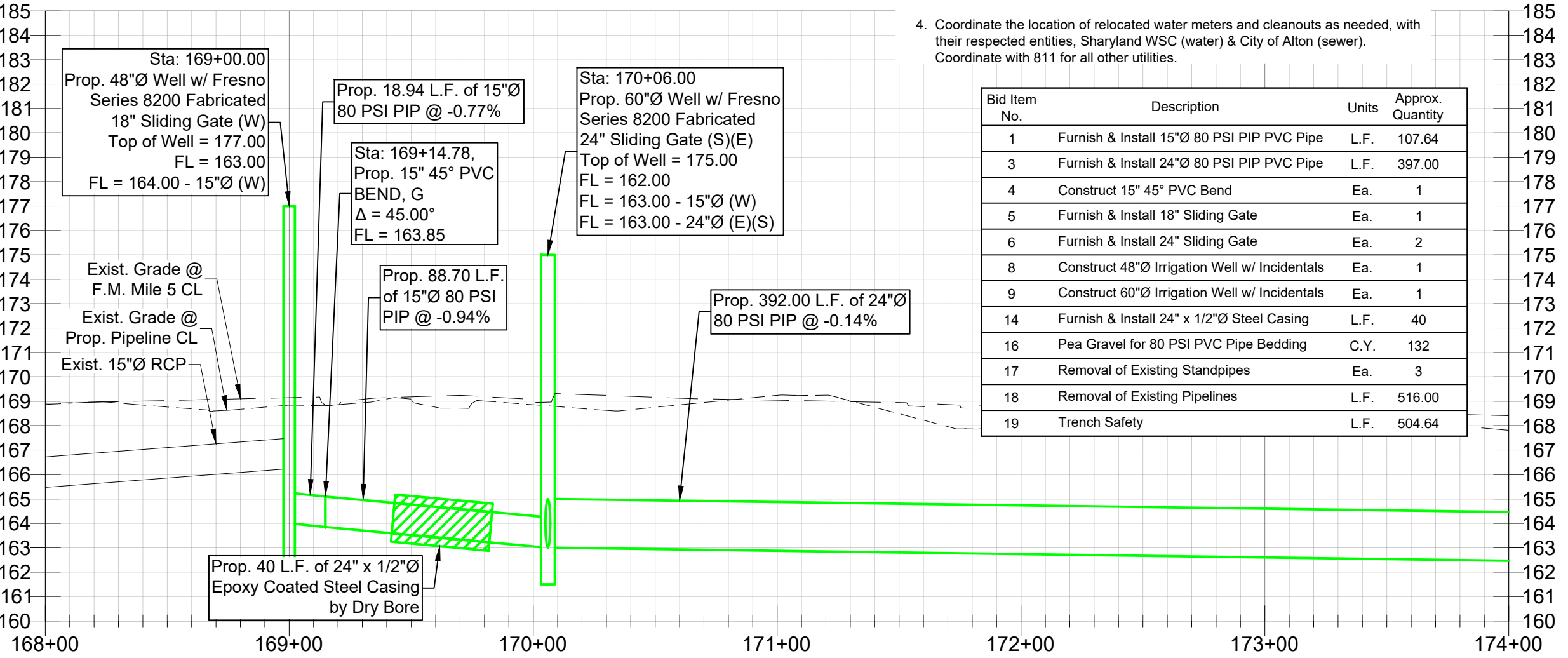
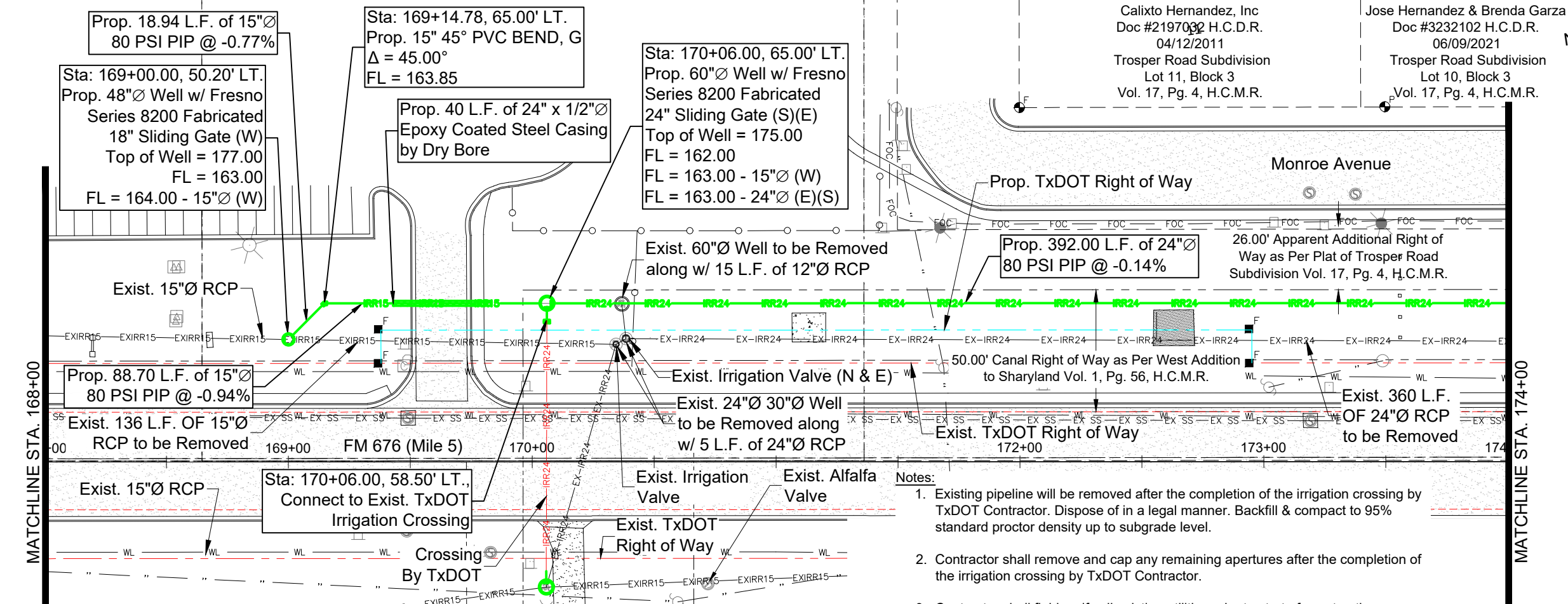
SCALE
 HORIZONTAL: 1"=50'
 VERTICAL: 1"=5'

FERRIS, FLINN & MEDINA, LLC
 ENGINEERS SURVEYORS
 1405 N. STUART PLACE ROAD
 HARLINGEN, TEXAS 79532
PHONE (361) 364-2236 FAX (361) 364-1023
 TEXAS BOARD OF PROFESSIONAL LAND SURVEYORS TEXAS BOARD OF PROFESSIONAL ENGINEERS
 FIRM REGISTRATION NO. 1520702

UNITED IRRIGATION DISTRICT
 FM 676 (MILE 5)
 INSPIRATION ROAD TO SH107
 IRRIGATION PLAN & PROFILE LT.
 STA. 149+00 TO STA. 155+00

SCALE: 1" = 50'		SHEET 09 OF 20	
DN:	CONT	SECT	JOB
CK DN:	---	---	FM 676
DW:	DIST	COUNTY	SHEET NO.
CK DW:	PHR	HIDALGO	
TR:			
CK TR:			

F:\0202 JUD\202-058 FM 676 (Mile 5) Inspiration Rd to SH107\DWG\202-058 TXDOT.dwg, 06-14-18_P&P



Calixto Hernandez, Inc
 Doc #2197032 H.C.D.R.
 04/12/2011
 Troser Road Subdivision
 Lot 11, Block 3
 Vol. 17, Pg. 4, H.C.M.R.

Jose Hernandez & Brenda Garza
 Doc #3232102 H.C.D.R.
 06/09/2021
 Troser Road Subdivision
 Lot 10, Block 3
 Vol. 17, Pg. 4, H.C.M.R.

LEGEND

- TEMPORARY BENCHMARK
- CONCRETE MONUMENT FOUND
- X MARK FOUND
- IRON ROD FOUND
- NAIL FOUND
- PIPE FOUND
- POST
- POWER POLE
- ANCHOR POLE
- SIGN
- IRRIGATION WELL
- MANHOLE
- TRAFFIC LIGHT
- SECURITY LIGHT POST
- STREET LIGHT POST
- CURB INLET
- GRATE INLET
- EXIST. TOP OF BANK
- EXIST. OVERHEAD POWER LINE
- EXIST. FENCE
- EXIST. UNDERGROUND ELECTRIC CABLE
- EXIST. SANITARY SEWER
- EXIST. STORM DRAIN
- S.W.S.C. WATERLINE
- EXIST. 15" IRRIGATION LINE
- EXIST. 24" IRRIGATION LINE
- PROP. 15" IRRIGATION LINE BY U.I.D.
- PROP. 24" IRRIGATION LINE BY U.I.D.
- PROP. 24" IRRIGATION LINE BY TXDOT
- EXIST. ROAD EASEMENT
- EXIST. TXDOT RIGHT OF WAY
- PROP. TXDOT RIGHT OF WAY

- Notes:**
- Existing pipeline will be removed after the completion of the irrigation crossing by TxDOT Contractor. Dispose of in a legal manner. Backfill & compact to 95% standard proctor density up to subgrade level.
 - Contractor shall remove and cap any remaining apertures after the completion of the irrigation crossing by TxDOT Contractor.
 - Contractor shall field verify all existing utilities prior to start of construction.
 - Coordinate the location of relocated water meters and cleanouts as needed, with their respected entities, Sharyland WSC (water) & City of Alton (sewer). Coordinate with 811 for all other utilities.

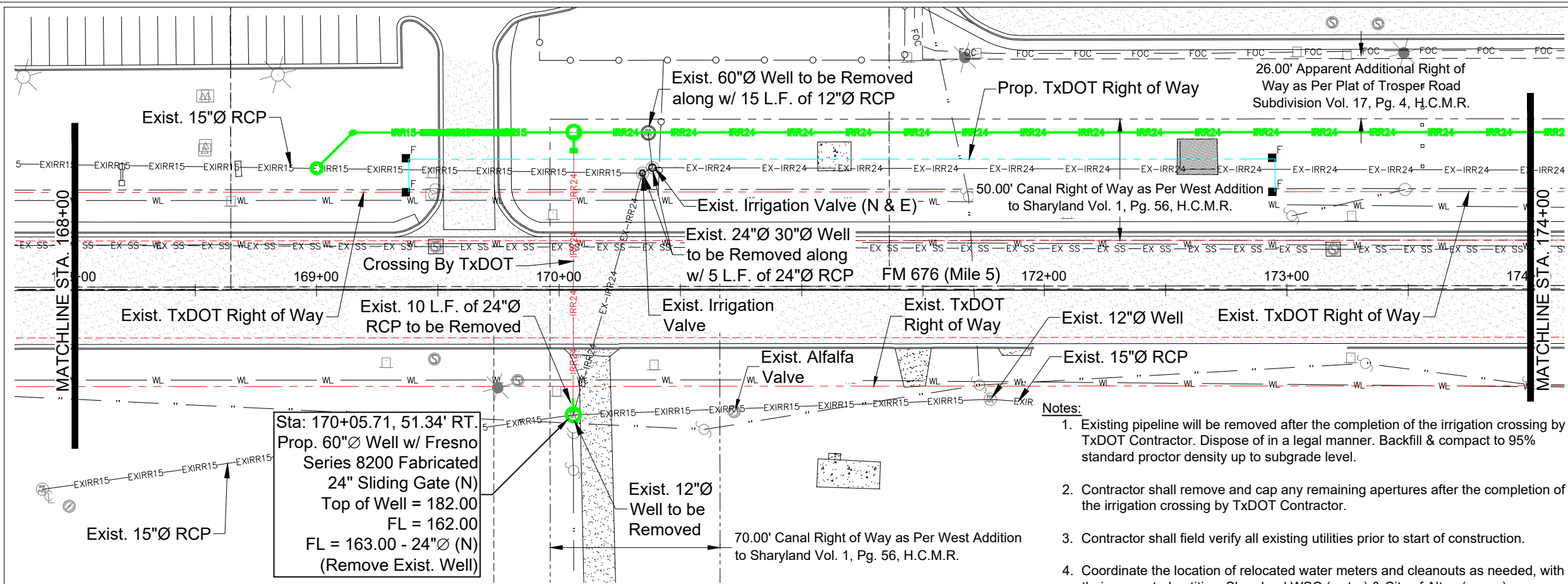
Bid Item No.	Description	Units	Approx. Quantity
1	Furnish & Install 15"Ø 80 PSI PIP PVC Pipe	L.F.	107.64
3	Furnish & Install 24"Ø 80 PSI PIP PVC Pipe	L.F.	397.00
4	Construct 15" 45° PVC Bend	Ea.	1
5	Furnish & Install 18" Sliding Gate	Ea.	1
6	Furnish & Install 24" Sliding Gate	Ea.	2
8	Construct 48"Ø Irrigation Well w/ Incidentals	Ea.	1
9	Construct 60"Ø Irrigation Well w/ Incidentals	Ea.	1
14	Furnish & Install 24" x 1/2"Ø Steel Casing	L.F.	40
16	Pea Gravel for 80 PSI PVC Pipe Bedding	C.Y.	132
17	Removal of Existing Standpipes	Ea.	3
18	Removal of Existing Pipelines	L.F.	516.00
19	Trench Safety	L.F.	504.64



SCALE
 HORIZONTAL: 1"=50'
 VERTICAL: 1"=5'
FERRIS, FLINN & MEDINA, LLC
 ENGINEERS SURVEYORS
 1405 N. STUART PLACE ROAD
 HARLINGEN, TEXAS 79532
 PHONE (361) 364-2200 FAX (361) 364-1023
TEXAS BOARD OF PROFESSIONAL LAND SURVEYORS TEXAS BOARD OF PROFESSIONAL ENGINEERS
 FIRM REGISTRATION NO. 1329702

UNITED IRRIGATION DISTRICT
 FM 676 (MILE 5)
 INSPIRATION ROAD TO SH107
 IRRIGATION PLAN & PROFILE
 STA. 168+00 TO STA. 174+00

SCALE: 1" = 50'		SHEET 10 OF 20	
DN:	CONT:	SECT:	JOB:
CK DN:	---	---	---
DW:	---	---	FM 676
CK DW:	DIST:	COUNTY:	SHEET NO.:
TR:	PHR	HIDALGO	
CK TR:			

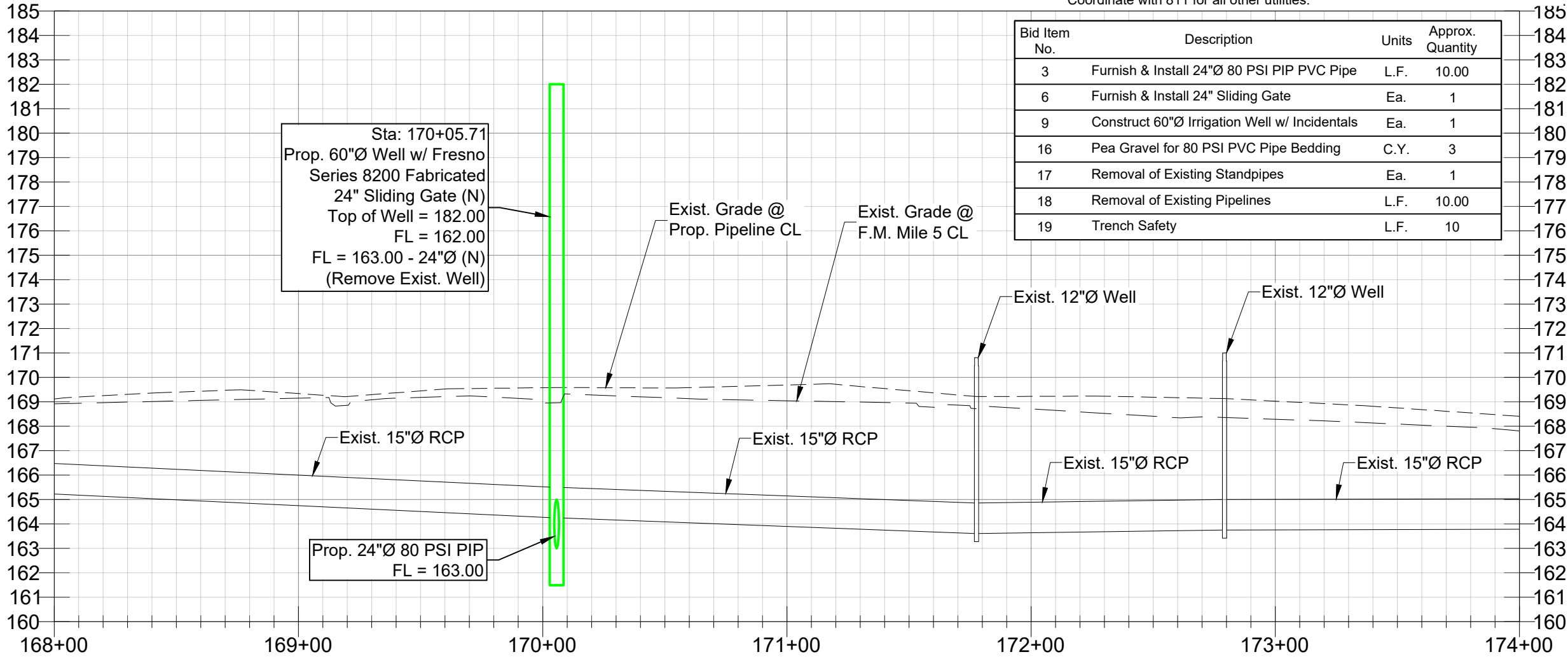


LEGEND

- TEMPORARY BENCHMARK
- CONCRETE MONUMENT FOUND
- X MARK FOUND
- IRON ROD FOUND
- NAIL FOUND
- PIPE FOUND
- POST
- POWER POLE
- ANCHOR POLE
- SIGN
- IRRIGATION WELL
- MANHOLE
- TRAFFIC LIGHT
- SECURITY LIGHT POST
- STREET LIGHT POST
- CURB INLET
- GRATE INLET
- EXIST. TOP OF BANK
- EXIST. OVERHEAD POWER LINE
- EXIST. FENCE
- EXIST. UNDERGROUND ELECTRIC CABLE
- EXIST. FIBER OPTIC CABLE
- EXIST. SANITARY SEWER
- EXIST. STORM DRAIN
- S.W.S.C. WATERLINE
- EXIST. 15" IRRIGATION LINE
- EXIST. 24" IRRIGATION LINE
- PROP. 15" IRRIGATION LINE BY U.I.D.
- PROP. 24" IRRIGATION LINE BY U.I.D.
- PROP. 24" IRRIGATION LINE BY TXDOT
- EXIST. ROAD EASEMENT
- EXIST. TXDOT RIGHT OF WAY
- PROP. TXDOT RIGHT OF WAY

- Notes:**
- Existing pipeline will be removed after the completion of the irrigation crossing by TxDOT Contractor. Dispose of in a legal manner. Backfill & compact to 95% standard proctor density up to subgrade level.
 - Contractor shall remove and cap any remaining apertures after the completion of the irrigation crossing by TxDOT Contractor.
 - Contractor shall field verify all existing utilities prior to start of construction.
 - Coordinate the location of relocated water meters and cleanouts as needed, with their respected entities, Sharyland WSC (water) & City of Alton (sewer). Coordinate with 811 for all other utilities.

Sta: 170+05.71, 51.34' RT.
 Prop. 60"Ø Well w/ Fresno Series 8200 Fabricated 24" Sliding Gate (N)
 Top of Well = 182.00
 FL = 162.00
 FL = 163.00 - 24"Ø (N)
 (Remove Exist. Well)



Bid Item No.	Description	Units	Approx. Quantity
3	Furnish & Install 24"Ø 80 PSI PIP PVC Pipe	L.F.	10.00
6	Furnish & Install 24" Sliding Gate	Ea.	1
9	Construct 60"Ø Irrigation Well w/ Incidentals	Ea.	1
16	Pea Gravel for 80 PSI PVC Pipe Bedding	C.Y.	3
17	Removal of Existing Standpipes	Ea.	1
18	Removal of Existing Pipelines	L.F.	10.00
19	Trench Safety	L.F.	10

APPENDUM NO. 1

ANTONIO L. REYNA
 145245
 LICENSED PROFESSIONAL ENGINEER

Antonio Reyna
 4-8-2024

SCALE
 HORIZONTAL: 1"=50'
 VERTICAL: 1"=5'

FERRIS, FLINN & MEDINA, LLC
 ENGINEERS SURVEYORS
 1405 N. STUART PLACE ROAD
 HARLINGEN, TEXAS 79532
 PHONE (361) 364-2200 FAX (361) 364-1023
TEXAS BOARD OF PROFESSIONAL LAND SURVEYORS TEXAS BOARD OF PROFESSIONAL ENGINEERS
 FIRM REGISTRATION NO. 1320700

UNITED IRRIGATION DISTRICT

FM 676 (MILE 5)
 INSPIRATION ROAD TO SH107
 IRRIGATION PLAN & PROFILE
 STA. 168+00 TO STA. 174+00

SCALE: 1" = 50'		SHEET 11 OF 20	
DN:	CONT	SECT	JOB
CK DN:	---	---	FM 676
DW:	DIST	COUNTY	SHEET NO.
CK DW:	PHR	HIDALGO	
TR:			
CK TR:			

F:\0202 JUD\202-058 FM 676 (Mile 5) Inspiration Rd to SH107\DWG\202-058 TXDOT.dwg, 06-14-18 P&P

Jose Hernandez & Brenda Garza
 Doc #3232102 H.C.D.R.
 06/09/2021
 Trospers Road Subdivision
 Lot 10, Block 3
 Vol. 17, Pg. 4, H.C.M.R.

Virginia Rios
 Doc #2935710 H.C.D.R.
 07/26/2018
 Trospers Road Subdivision
 Lot 10, Block 2
 Vol. 17, Pg. 4, H.C.M.R.

Virginia Rios
 Doc #753878 H.C.D.R.
 03/05/1999
 Trospers Road Subdivision
 Lot 11, Block 2
 Vol. 17, Pg. 4, H.C.M.R.

Sta: 177+51.74, 68.27' LT.,
 Prop. 24" PVC CAP
 FL = 162.00

Sta: 177+45.00, 65.00' LT.
 Prop. 60"Ø Well w/ Fresno
 Series 8200 Fabricated
 24" Sliding Gate (E)
 Top of Well = 177.00
 FL = 161.00
 FL = 162.00 - 24"Ø (W)(E)

Sta: 178+50.00, -115.92' LT.
 Prop. 60"Ø Well
 w/ Fresno Series
 8200 Fabricated
 24" Sliding Gate (W)(N)
 Top of Well = 174.50
 FL = 158.50
 FL=159.50 - 24Ø (W)(N)

Sta: 178+43.25, 112.65' LT.,
 Prop. 24" PVC CAP
 FL = 159.50

Prop. 342.00 L.F. of 24"Ø
 80 PSI PIP @ -0.14%

Exist. 433 L.F. OF 24"Ø
 RCP to be Removed

Exist. 254 L.F. OF 24"Ø
 RCP to be Removed

Prop. TxDOT Right of Way

Exist. TxDOT Right of Way

FM 676 (Mile 5)

Exist. (3) 12"Ø Wells
 to be Removed

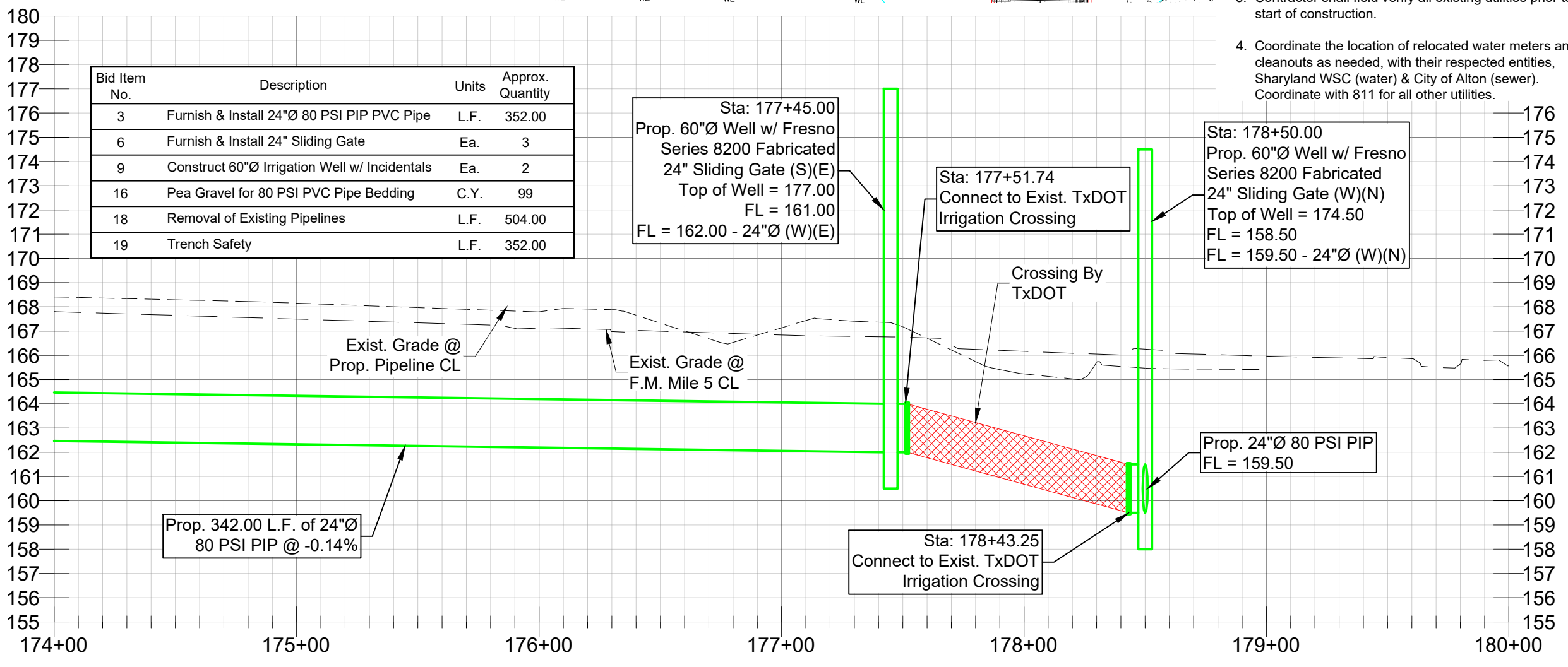
Cross Section @
 Sta: 178+50.00
 (See Sheet 14)

Notes:

- Existing pipeline will be removed after the completion of the irrigation crossing by TxDOT Contractor. Dispose of in a legal manner. Backfill & compact to 95% standard proctor density up to subgrade level.
- Contractor shall remove and cap any remaining apertures after the completion of the irrigation crossing by TxDOT Contractor.
- Contractor shall field verify all existing utilities prior to start of construction.
- Coordinate the location of relocated water meters and cleanouts as needed, with their respected entities, Sharyland WSC (water) & City of Alton (sewer). Coordinate with 811 for all other utilities.

LEGEND

	TEMPORARY BENCHMARK
	CONCRETE MONUMENT FOUND
	X MARK FOUND
	IRON ROD FOUND
	NAIL FOUND
	PIPE FOUND
	POST
	POWER POLE
	ANCHOR POLE
	SIGN
	IRRIGATION WELL
	MANHOLE
	TRAFFIC LIGHT
	SECURITY LIGHT POST
	STREET LIGHT POST
	CURB INLET
	GRATE INLET
	EXIST. TOP OF BANK
	EXIST. OVERHEAD POWER LINE
	EXIST. FENCE
	EXIST. UNDERGROUND ELECTRIC CABLE
	EXIST. FIBER OPTIC CABLE
	EXIST. SANITARY SEWER
	EXIST. STORM DRAIN
	S.W.S.C. WATERLINE
	EXIST. 15" IRRIGATION LINE
	EXIST. 24" IRRIGATION LINE
	PROP. 15" IRRIGATION LINE BY U.I.D.
	PROP. 24" IRRIGATION LINE BY U.I.D.
	PROP. 24" IRRIGATION LINE BY TxDOT
	EXIST. ROAD EASEMENT
	EXIST. TxDOT RIGHT OF WAY
	PROP. TxDOT RIGHT OF WAY



Bid Item No.	Description	Units	Approx. Quantity
3	Furnish & Install 24"Ø 80 PSI PIP PVC Pipe	L.F.	352.00
6	Furnish & Install 24" Sliding Gate	Ea.	3
9	Construct 60"Ø Irrigation Well w/ Incidentals	Ea.	2
16	Pea Gravel for 80 PSI PVC Pipe Bedding	C.Y.	99
18	Removal of Existing Pipelines	L.F.	504.00
19	Trench Safety	L.F.	352.00

Sta: 177+45.00
 Prop. 60"Ø Well w/ Fresno
 Series 8200 Fabricated
 24" Sliding Gate (S)(E)
 Top of Well = 177.00
 FL = 161.00
 FL = 162.00 - 24"Ø (W)(E)

Sta: 177+51.74
 Connect to Exist. TxDOT
 Irrigation Crossing

Sta: 178+50.00
 Prop. 60"Ø Well w/ Fresno
 Series 8200 Fabricated
 24" Sliding Gate (W)(N)
 Top of Well = 174.50
 FL = 158.50
 FL = 159.50 - 24"Ø (W)(N)

Prop. 24"Ø 80 PSI PIP
 FL = 159.50

Sta: 178+43.25
 Connect to Exist. TxDOT
 Irrigation Crossing

APPENDUM NO. 1

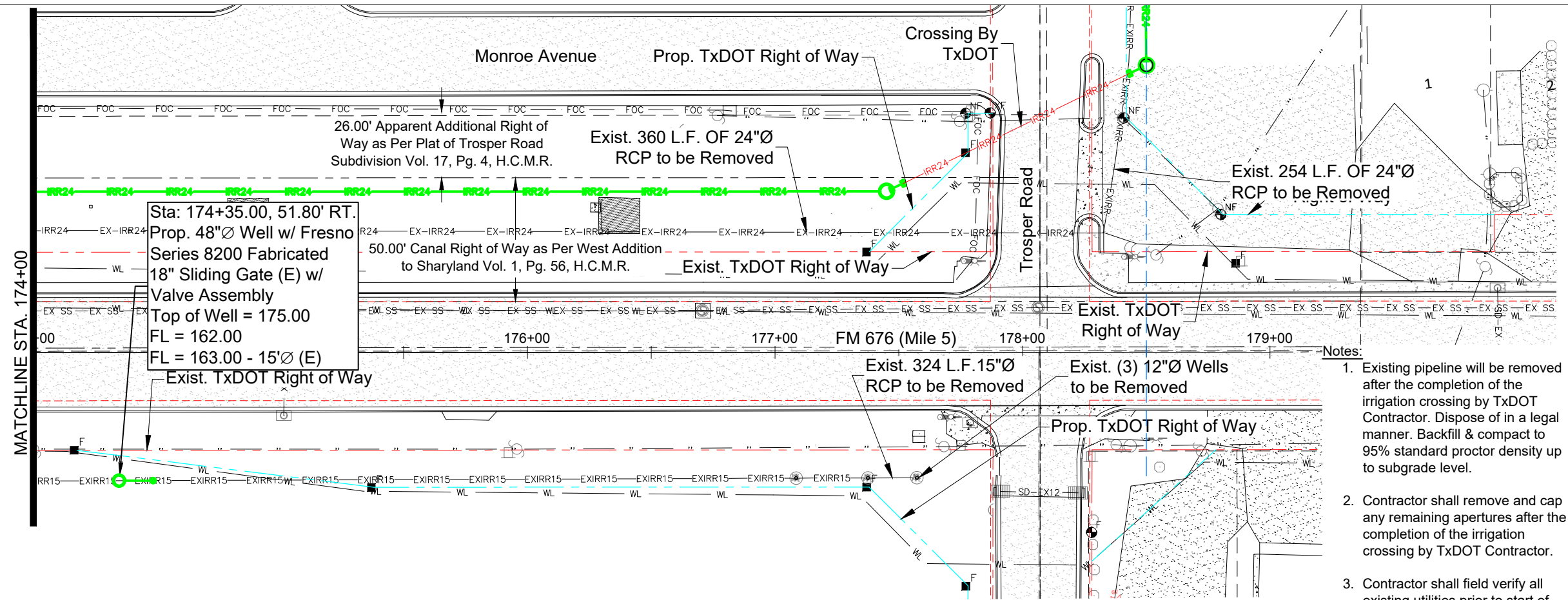


SCALE
 HORIZONTAL: 1"=50'
 VERTICAL: 1"=5'
FERRIS, FLINN & MEDINA, LLC
 ENGINEERS SURVEYORS
 1405 N. STUART PLACE ROAD
 HARLINGEN, TEXAS 79502
PHONE: (361) 294-2296 FAX: (361) 294-1023
 TEXAS BOARD OF PROFESSIONAL LAND SURVEYORS TEXAS BOARD OF PROFESSIONAL ENGINEERS
 FIRM REGISTRATION NO. 15207002

UNITED IRRIGATION DISTRICT
 FM 676 (MILE 5)
 INSPIRATION ROAD TO SH107
 IRRIGATION PLAN & PROFILE
 STA. 174+00 TO STA. 179+00

SCALE: 1" = 50'		SHEET 12 OF 20	
DN:	CONT	SECT	JOB
CK DN:	---	---	FM 676
DW:			
CK DW:	DIST	COUNTY	SHEET NO.
TR:	PHR	HIDALGO	
CK TR:			

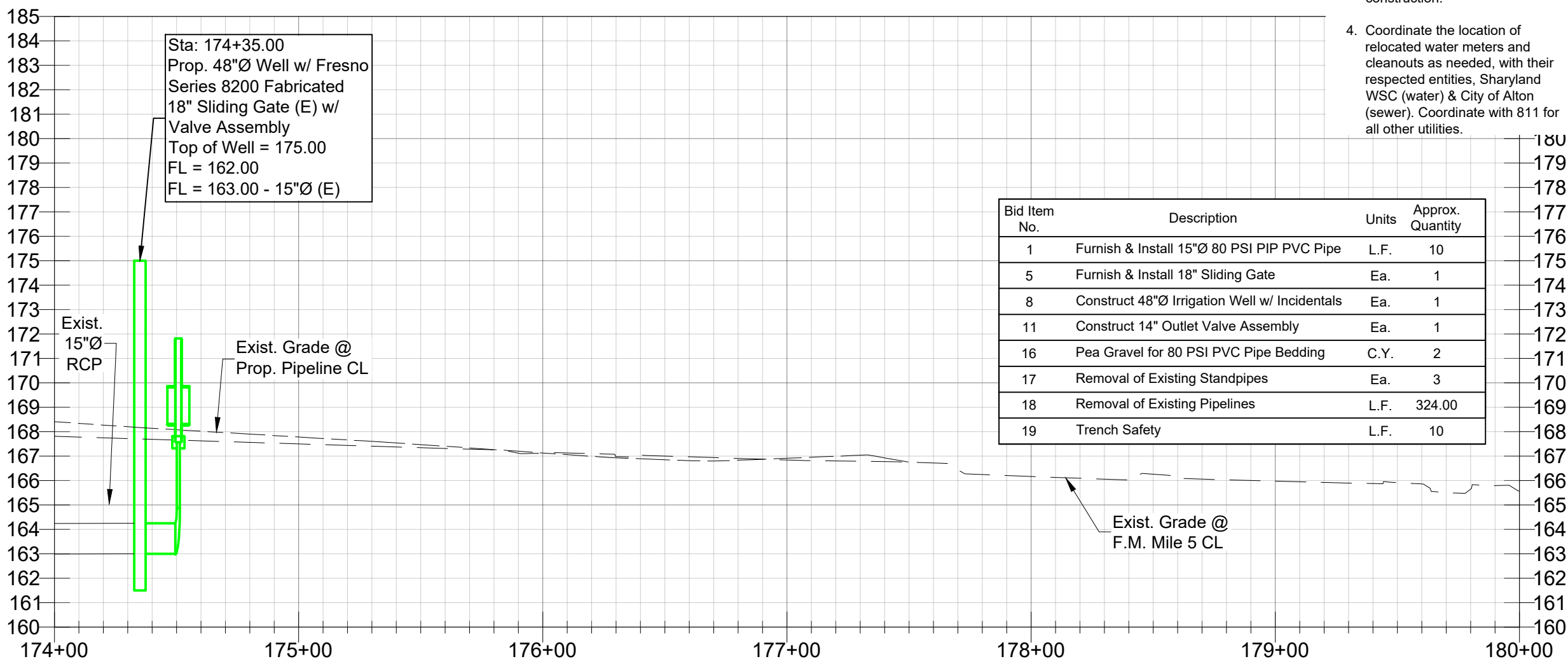
F:\0202 UID\02-058 FM 676 (Mile 5) Inspiration Rd to SH107\DWG\202-058 TXDOT.dwg, 06-14-18 P&P



LEGEND

- ⊕ TEMPORARY BENCHMARK
- ⊗ CONCRETE MONUMENT FOUND
- X MARK FOUND
- IRON ROD FOUND
- NAIL FOUND
- PIPE FOUND
- POST
- POWER POLE
- ANCHOR POLE
- SIGN
- IRRIGATION WELL
- MANHOLE
- TRAFFIC LIGHT
- SECURITY LIGHT POST
- STREET LIGHT POST
- CURB INLET
- GRATE INLET
- EXIST. TOP OF BANK
- EXIST. OVERHEAD POWER LINE
- EXIST. FENCE
- UE EXIST. UNDERGROUND ELECTRIC CABLE
- FOC EXIST. FIBER OPTIC CABLE
- EX SS EXIST. SANITARY SEWER
- SD-EX EXIST. STORM DRAIN
- WL S.W.S.C. WATERLINE
- EX-IRR15 EXIST. 15" IRRIGATION LINE
- EX-IRR24 EXIST. 24" IRRIGATION LINE
- RR15 PROP. 15" IRRIGATION LINE BY U.I.D.
- RR24 PROP. 24" IRRIGATION LINE BY U.I.D.
- IRR24 PROP. 24" IRRIGATION LINE BY TXDOT
- EXIST. ROAD EASEMENT
- EXIST. TXDOT RIGHT OF WAY
- PROP. TXDOT RIGHT OF WAY

- Notes:**
- Existing pipeline will be removed after the completion of the irrigation crossing by TxDOT Contractor. Dispose of in a legal manner. Backfill & compact to 95% standard proctor density up to subgrade level.
 - Contractor shall remove and cap any remaining apertures after the completion of the irrigation crossing by TxDOT Contractor.
 - Contractor shall field verify all existing utilities prior to start of construction.
 - Coordinate the location of relocated water meters and cleanouts as needed, with their respected entities, Sharyland WSC (water) & City of Alton (sewer). Coordinate with 811 for all other utilities.



Bid Item No.	Description	Units	Approx. Quantity
1	Furnish & Install 15"Ø 80 PSI PIP PVC Pipe	L.F.	10
5	Furnish & Install 18" Sliding Gate	Ea.	1
8	Construct 48"Ø Irrigation Well w/ Incidentals	Ea.	1
11	Construct 14" Outlet Valve Assembly	Ea.	1
16	Pea Gravel for 80 PSI PVC Pipe Bedding	C.Y.	2
17	Removal of Existing Standpipes	Ea.	3
18	Removal of Existing Pipelines	L.F.	324.00
19	Trench Safety	L.F.	10

APPENDUM NO. 1

ANTONIO L. REYNA
145245
LICENSED PROFESSIONAL ENGINEER

Antonio Reyna
4-8-2024

SCALE
HORIZONTAL: 1"=50'
VERTICAL: 1"=5'

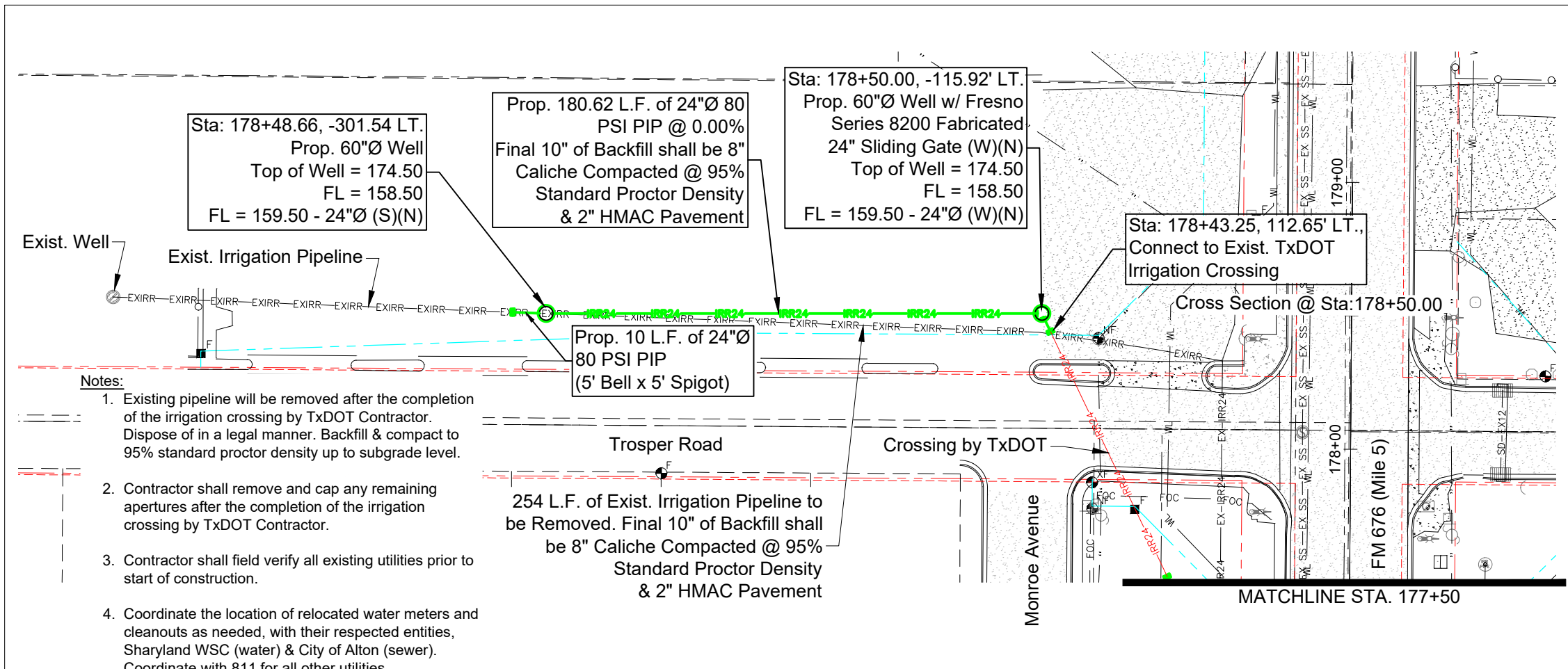
FERRIS, FLINN & MEDINA, LLC
ENGINEERS SURVEYORS
1405 N. STUART PLACE ROAD
HARLINGEN, TEXAS 79502
PHONE: (361) 294-2200 FAX: (361) 294-1029
TEXAS BOARD OF PROFESSIONAL LAND SURVEYORS TEXAS BOARD OF PROFESSIONAL ENGINEERS
P.L.S. REGISTRATION NO. 1320700 P.E. REGISTRATION NO. 14861

UNITED IRRIGATION DISTRICT

FM 676 (MILE 5)
INSPIRATION ROAD TO SH107
IRRIGATION PLAN & PROFILE
STA. 174+00 TO STA. 179+00

SCALE: 1" = 50'		SHEET 13 OF 20	
DN:	CONT	SECT	JOB
CK DN:	---	---	---
DW:			FM 676
CK DW:			
TR:	DIST	COUNTY	SHEET NO.
CK TR:	PHR	HIDALGO	

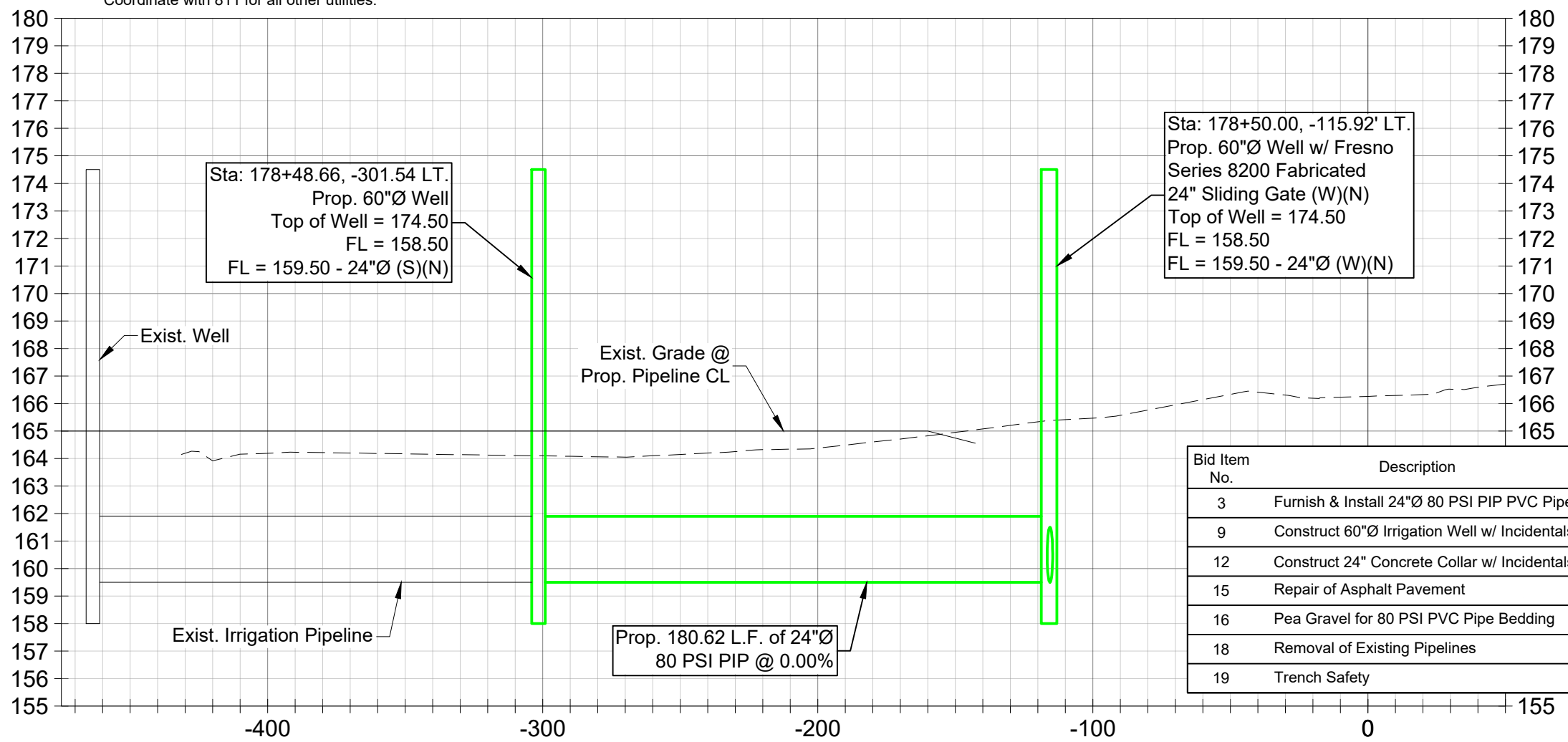
F:\0202 JUD\202-058 FM 676 (Mile 5) Inspiration Rd to SH107\DWG\202-058 TXDOT.dwg, 06-14-18



- Notes:**
- Existing pipeline will be removed after the completion of the irrigation crossing by TxDOT Contractor. Dispose of in a legal manner. Backfill & compact to 95% standard proctor density up to subgrade level.
 - Contractor shall remove and cap any remaining apertures after the completion of the irrigation crossing by TxDOT Contractor.
 - Contractor shall field verify all existing utilities prior to start of construction.
 - Coordinate the location of relocated water meters and cleanouts as needed, with their respected entities, Sharyland WSC (water) & City of Alton (sewer). Coordinate with 811 for all other utilities.

LEGEND

	TEMPORARY BENCHMARK
	CONCRETE MONUMENT FOUND
	X MARK FOUND
	IRON ROD FOUND
	NAIL FOUND
	PIPE FOUND
	POST
	POWER POLE
	ANCHOR POLE
	SIGN
	IRRIGATION WELL
	MANHOLE
	TRAFFIC LIGHT
	SECURITY LIGHT POST
	STREET LIGHT POST
	CURB INLET
	GRATE INLET
	EXIST. TOP OF BANK
	EXIST. OVERHEAD POWER LINE
	EXIST. FENCE
	EXIST. UNDERGROUND ELECTRIC CABLE
	EXIST. FIBER OPTIC CABLE
	EXIST. SANITARY SEWER
	EXIST. STORM DRAIN
	S.W.S.C. WATERLINE
	EXIST. 15" IRRIGATION LINE
	EXIST. 24" IRRIGATION LINE
	PROP. 18" IRRIGATION LINE BY U.I.D.
	PROP. 24" IRRIGATION LINE BY U.I.D.
	PROP. 24" IRRIGATION LINE BY TXDOT
	EXIST. ROAD EASEMENT
	EXIST. TXDOT RIGHT OF WAY
	PROP. TXDOT RIGHT OF WAY



Bid Item No.	Description	Units	Approx. Quantity
3	Furnish & Install 24"Ø 80 PSI PIP PVC Pipe	L.F.	191.00
9	Construct 60"Ø Irrigation Well w/ Incidentals	Ea.	1
12	Construct 24" Concrete Collar w/ Incidentals	Ea.	1
15	Repair of Asphalt Pavement	L.F.	450.00
16	Pea Gravel for 80 PSI PVC Pipe Bedding	C.Y.	54
18	Removal of Existing Pipelines	L.F.	264.00
19	Trench Safety	L.F.	191.00

ADDENDUM NO. 1



SCALE
HORIZONTAL: 1"=50'
VERTICAL: 1"=5'

FERRIS, FLINN & MEDINA, LLC
ENGINEERS SURVEYORS
1405 N. STUART PLACE ROAD
HAIRLENGEN, TEXAS 77552
PHONE: (281) 364-2726 FAX: (281) 364-1023
TEXAS BOARD OF PROFESSIONAL LAND SURVEYORS TEXAS BOARD OF PROFESSIONAL ENGINEERS
FIRM REGISTRATION NO. 13207002 FIRM REGISTRATION NO. 1485

UNITED IRRIGATION DISTRICT
FM 676 (MILE 5)
INSPIRATION ROAD TO SH107
IRRIGATION CROSS SECTION
LT. STA. 178+50

SCALE: 1" = 50'		SHEET 14 OF 20	
DN:	CONT	SECT	JOB
CK DN:	---	---	---
DW:			FM 676
CK DW:			
TR:	DIST	COUNTY	SHEET NO.
CK TR:	PHR	HIDALGO	