

FERRIS, FLINN & MEDINA, LLC

E N G I N E E R S S U R V E Y O R S

ADDENDUM NO. 2

To: All Planholders
From: Antonio L. Reyna, PE
Subject: Harlingen Economic Development Corporation
The Park at Roosevelt – EDA Grant Project
Date: September 3, 2024

The Contract Documents & Plans are hereby modified as follows:

GENERAL CLARIFICATIONS

- All inlets and manholes will be backfilled with cement stabilized sand. All pipeline backfill, unless otherwise noted, shall be compacted to 95% standard proctor density.

CONTRACT DOCUMENTS

I. Advertisement for Bids

- The Bid Opening date will be Wednesday, September 11, 2024 @ 11:00 AM.

II. BID FORM

- Replace the Bid Proposal documents with the attached Bid Proposal, Pages 1 and 2, Addendum No. 2, dated 09/2024.

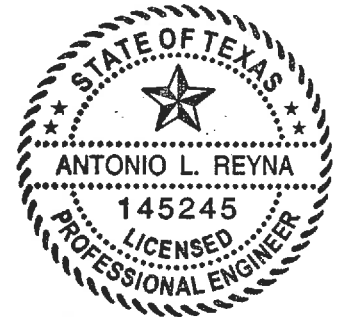
REFER TO CONTRACT PLANS

- I. Replace Plan Sheets 6, 9 and 10 with attached Revised Plan Sheets 6, 9 and 10, Addendum No. 2, dated 9/3/2024.

Addendum No. 2 Issued by,
FERRIS, FLINN & MEDINA, LLC
TBPE Firm Reg. No. F-897


Antonio L. Reyna, PE
Project Engineer

9.3.2024



Attachments:

Addendum No. 2 Bid Proposal
Addendum No. 2 Plan Sheet 6, 9 and 10

**THE PARK AT ROOSEVELT
HARLINGEN EDC
EDA GRANT PROJECT AWARD NO. 08-01-05716**

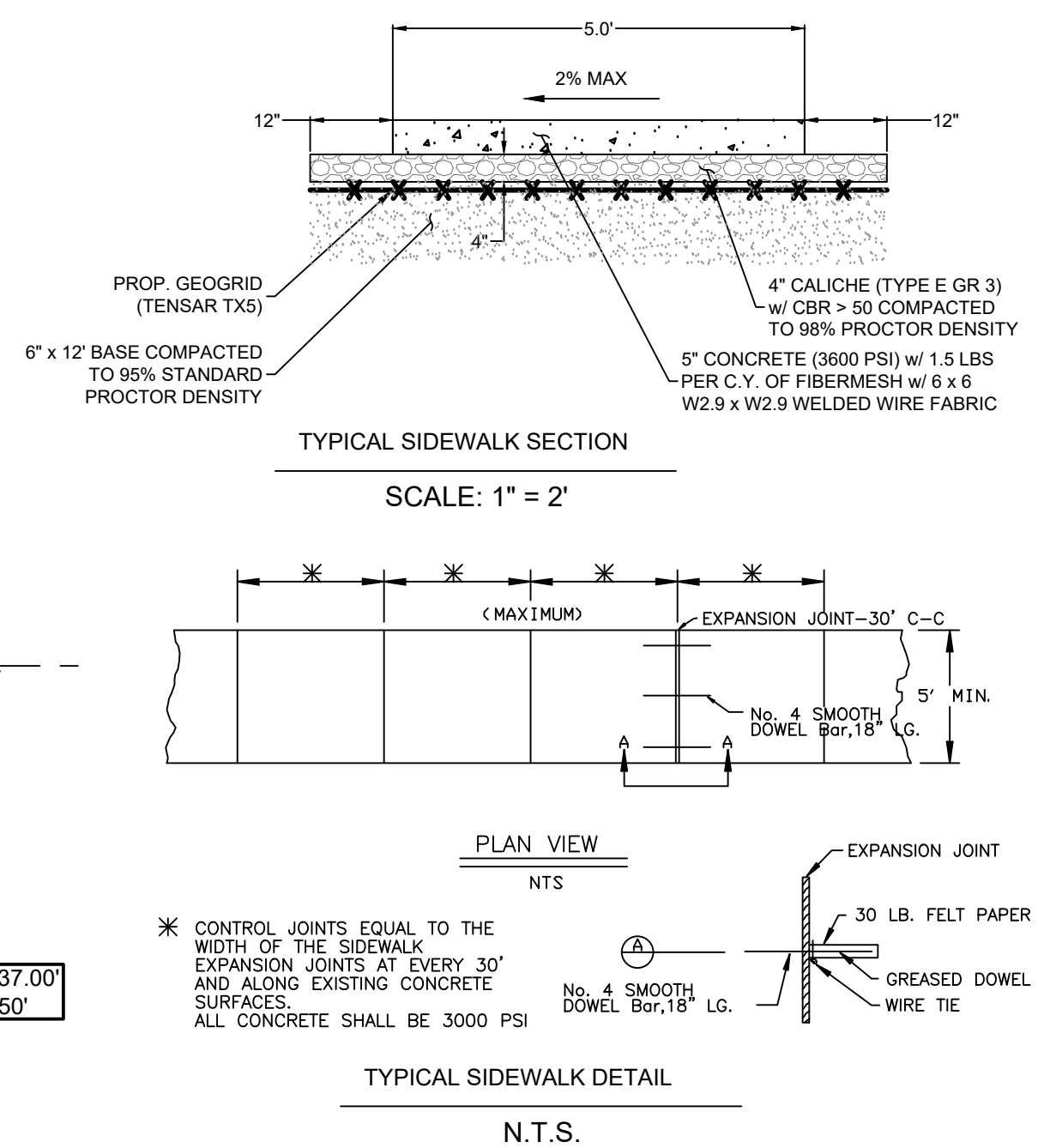
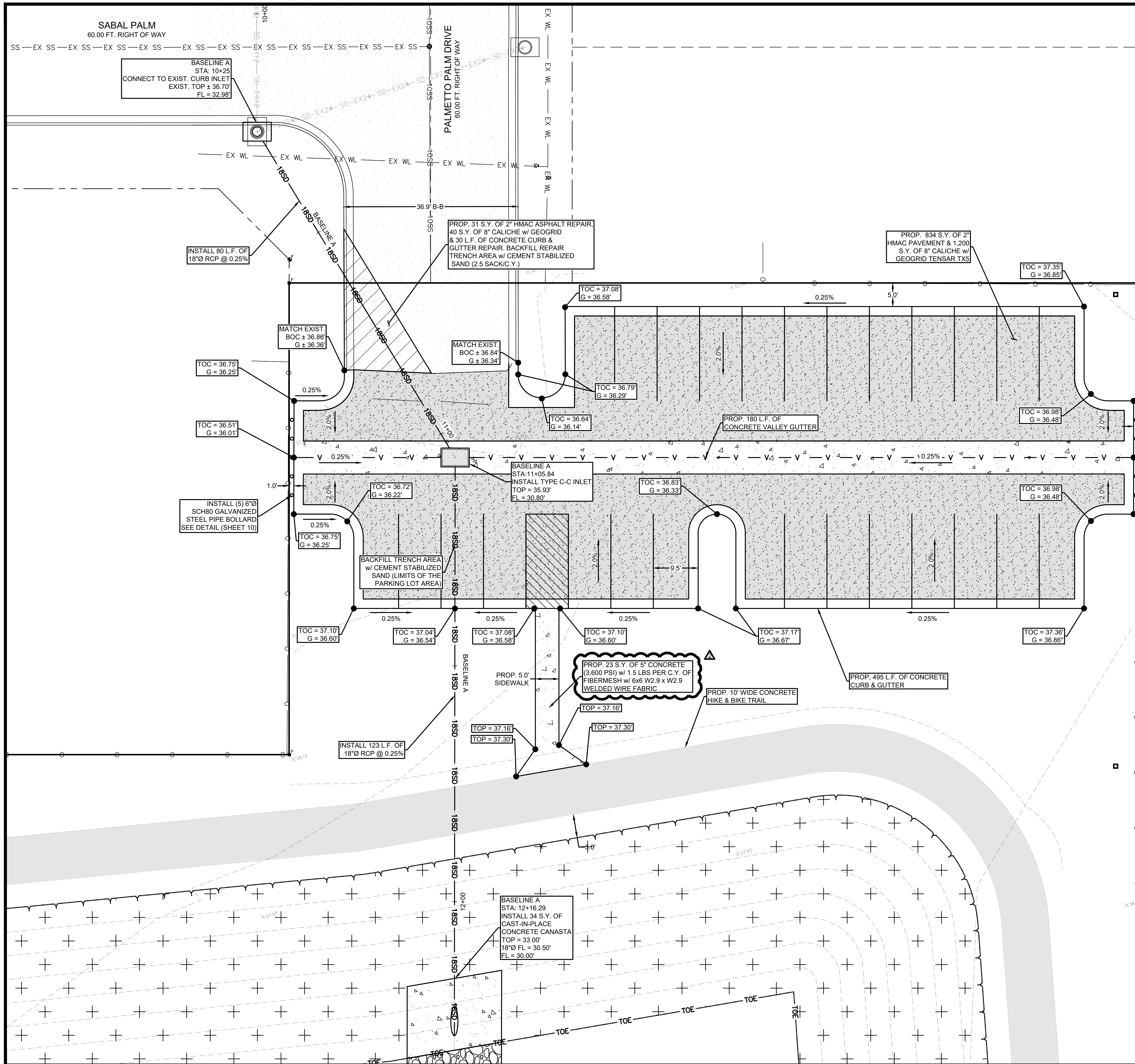
Bid Item	Qty	Units	Description	Unit Price	Total Price
Base Bid					
1	1,240	SY	6" Subgrade Prep including cut to grade and proof rolling, complete in place.		
2	1,240	SY	Furnish & Install Tensar TX5 at Parking Lot, complete in place.		
3	25	Tons	Lime Stabilization of Subgrade, complete in place.		
4	1,240	SY	Furnish & Install 8" Caliche Flex Base, complete in place.		
5	865	SY	Furnish & Install 2" Type "D" Hot Mix & Prime Oil, complete in place.		
6	525	LF	Furnish & Install Concrete Curb & Gutter, complete in place.		
7	180	LF	Furnish & Install Concrete Valley Gutter, complete in place.		
8	35	SY	Demolition of existing Palmetto Palm Drive, to accomadate 18" Storm Drain, complete in place.		
9	10	Each	Furnish & Install Galvanized Steel Pipe Bollards, complete in place.		
10	336	LF	Furnish & Install 18" Class III RCP Storm Sewer, complete in place.		
11	144	LF	Furnish & Install 24" Class III RCP Storm Sewer, complete in place.		
12	32	LF	Furnish & Install 24" Corrugated Metal Pipe (Polymer Coated) Storm Sewer, complete in place.		
13	2	Each	Connect to Existing Curb Inlet, complete in place.		
14	3	Each	Furnish & Install Type 'C' Grate Inlet, complete in place.		
15	1	Each	Furnish & Install Type 'C-C' Grate Inlet, complete in place.		
16	1	Each	Furnish & Install Conflict Manhole, complete in place.		
17	152	SY	Furnish & Install Concrete Rip Rap at Detention Pond, complete in place.		
18	49,850	BCY	Excavation of Detention Pond and placement of spoils on site, complete in place.		
19	11,300	SY	Hydromulching of detention pond slopes with Bermuda grass, complete in place.		

**THE PARK AT ROOSEVELT
HARLINGEN EDC
EDA GRANT PROJECT AWARD NO. 08-01-05716**

Bid Item	Qty	Units	Description	Unit Price	Total Price
20	320	kgal	Watering of Hydromulch based on an application rate of 0.5 inches per day for ten days on dates to be approved by the Engineer, measured either by meter or truckload in thousand gallons, complete in place.		
21	2,675	LF	Furnish & Install 10' Concrete Hike & Bike Trail, including excavation, subgrade prep, geogrid, materials and all other incidentals necessary to complete in place.		
22	23	SY	Furnish & Install 5' Concrete Hike & Bike Trail, including excavation, subgrade prep, geogrid, materials and all other incidentals necessary to complete in place.		
23	95	Tons	Furnish & Install 8" to 10" Grey Limestone Bull Rock with Geogrid, complete in place.		
24	1	LS	Parking Lot Striping, complete in place.		
25	1	LS	Erosion & Sediment Control		
26	512	LF	Trench Safety		
Alternate No. 1 - Conc. Parking Lot					
A.1	1,078	SY	Construct 6" Concrete Pavement, complete in place. (Reduce Bid Item 5 to 31 SY)		
A.2	1,200	SY	Furnish & Install 5" Limestone, complete in place. (Replace Bid Item 4)		
A.3	40	SY	Furnish & Install 6" Limestone at HMAC Road Repair, complete in place. (Replaces Base Bid Item 4)		
Alternate No. 2 - Limestone Flex Base at HMAC Parking Lot					
A.4	1,240	SY	Furnish & Install 6" Limestone, complete in place. (Replaces Base Bid Item 4)		
Total Amount Base Bid					
*Total Amount Base Bid + Alternate No. 1					
**Total Amount Base Bid + Alternate No. 2					

*Sum of Base Bid + Alternate No. 1, includes the removal of Base Bid Item No. 4 & Base Bid Item No. 7

**Sum of Base Bid + Alternate No. 2, includes the removal of Base Bid Item No. 4



LEGEND

G = PROP. GUTTER	EXIST. HMAC
FL = PROP. FLOWLINE	PROP. HMAC
TOC = PROP. TOP OF CURB	
TOG = PROP. TOP OF GRATE	
TOP = PROP. TOP OF PAVEMENT	
EOP = PROP. EDGE OF PAVEMENT	
EXIST. SIGN	EXIST. FIRE HYDRANT
EXIST. POST	EXIST. SECURITY LIGHT
EXIST. ANCHOR	EXIST. STREET LIGHT POST
EXIST. MAILBOX	EXIST. TRANSMISSION POLE
EXIST. MANHOLE	PROP. TYPE C-C INLET
EXIST. POWER POLE	PROP. TYPE C INLET
EXIST. WATER VALVE	
EXIST. WATER METER	
TOE	EXIST. TOE
EXIST. FENCE	EXIST. FENCE
30.00	EXIST. CONTOURS
WL	EXIST. WATERLINE
EX SW	EXIST. 8\"/>
EX 20W	EXIST. 20\"/>
GB	EXIST. GRADE BREAK
EX 12PM	EXIST. 12\"/>
EX SS	EXIST. SANITARY SEWER
EX 10SS	EXIST. 10\"/>
SD-EX12	EXIST. 12\"/>
SD-EX24	EXIST. 24\"/>
SD-EX30	EXIST. 30\"/>
SD-EX36	EXIST. 36\"/>
IR2	EXIST. IRRIGATION LINE
SD-18-SD-18	PROP. 18\"/>
SD-24-SD-24	PROP. 24\"/>
V	PROP. VALLEY GUTTER
GB	PROP. GRADE BREAK
TOE	PROP. TOP OF BANK
TOE	PROP. TOE
TOE	PROP. SILT FENCE

SCALE SHOWN IS FOR A 24"x36" SHEET

Scale: 1" = 10'

Scale: 1" = 2'

Scale: 1" = 10'

Scale: 1" = 10'

NOTES:
 1. CONTRACTOR SHALL FIELD VERIFY HORIZONTAL & VERTICAL LOCATION OF ALL UTILITIES PRIOR TO CONSTRUCTION.

FERRIS, FLINN & MEDINA, LLC
ENGINEERS SURVEYORS
 1405 N. STUART PLACE ROAD
 PALM VALLEY, TEXAS 78552
 REG. NO. 100370-00
 TEXAS BOARD OF PROFESSIONAL ENGINEERS AND LAND SURVEYORS
 FIRM REGISTRATION NO. F-897

STATE OF TEXAS
 ANTONIO L. REYNA
 LICENSED PROFESSIONAL ENGINEER
 145245
 9.3.2024

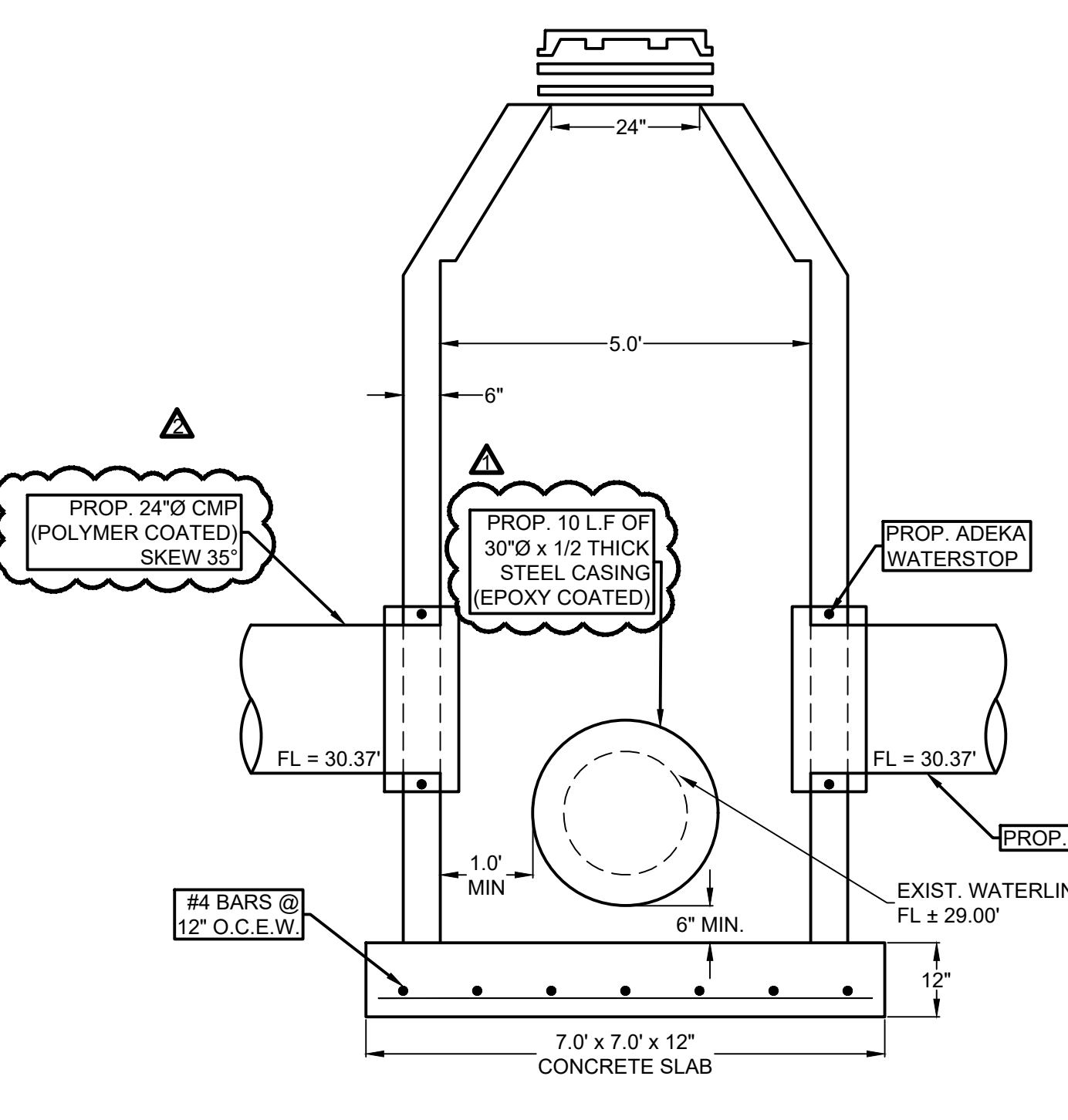
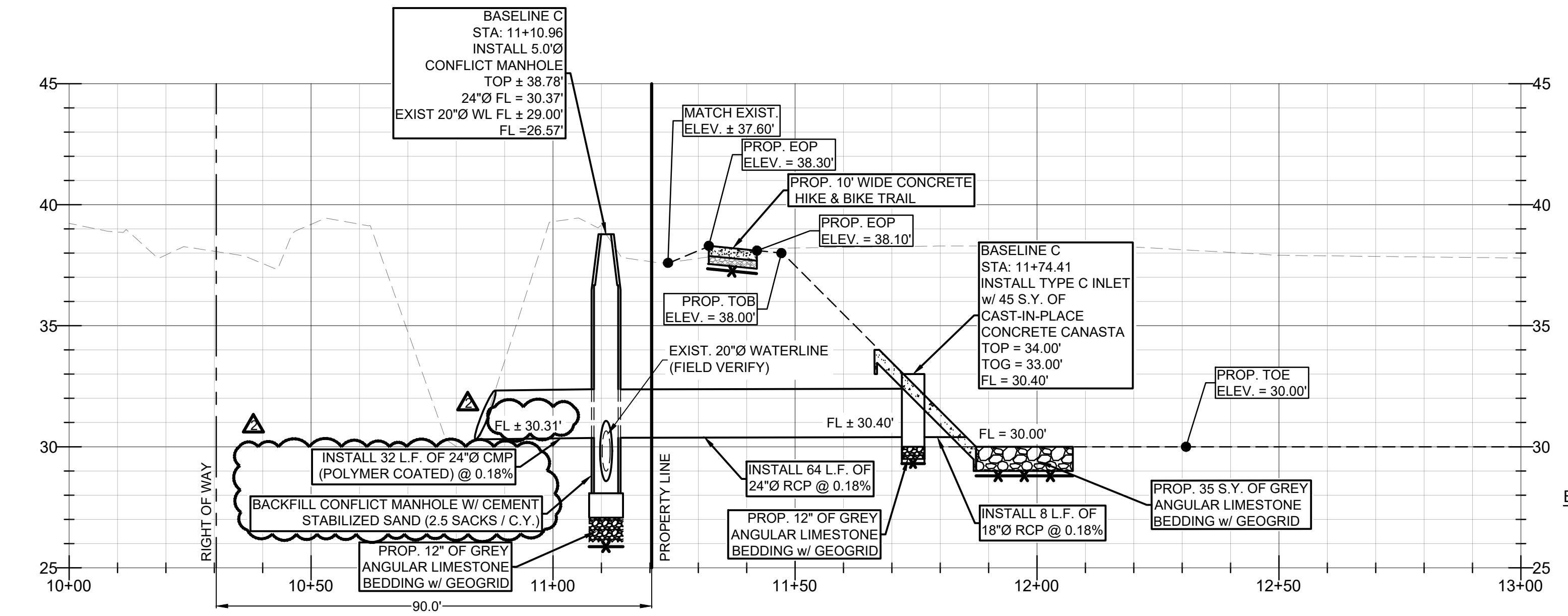
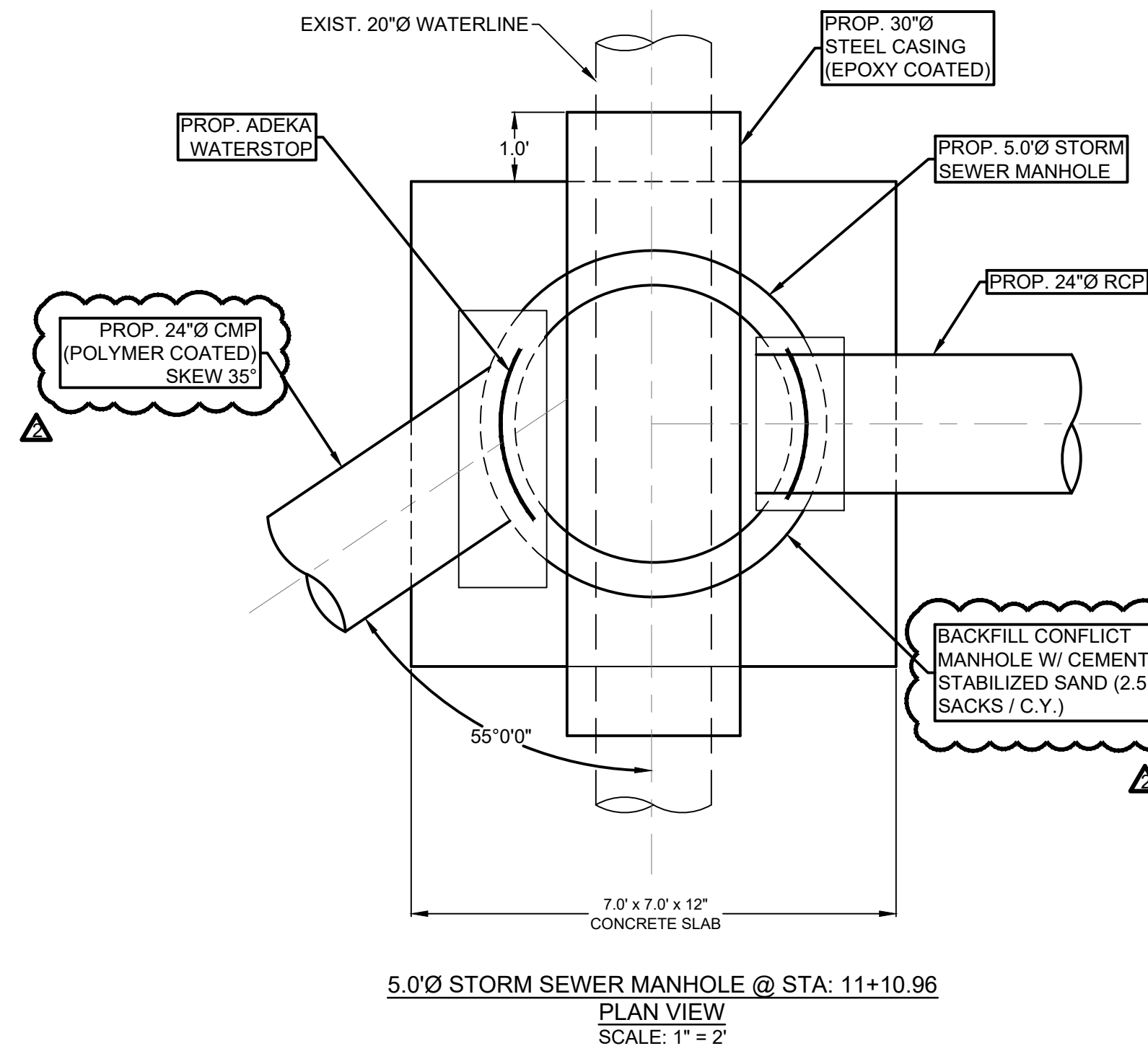
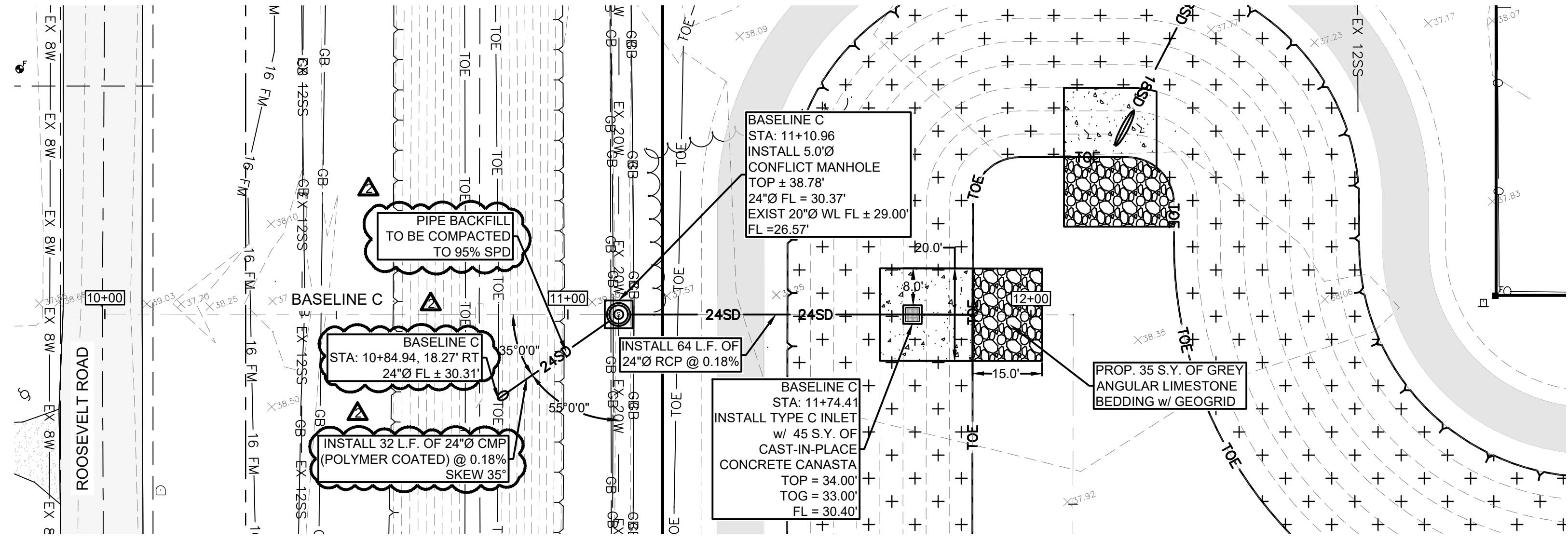
REVISIONS:
 09/03/2024
 ADDENDUM NO. 2
 FIBERMESH TO BE
 1.5 LBS PER C.Y.

HARLINGEN ECONOMIC DEVELOPMENT CORPORATION
 THE PARK AT ROOSEVELT - EDA GRANT PROJECT
 CONSTRUCTION PLANS
 PARKING LOT - PAVING & GRADING

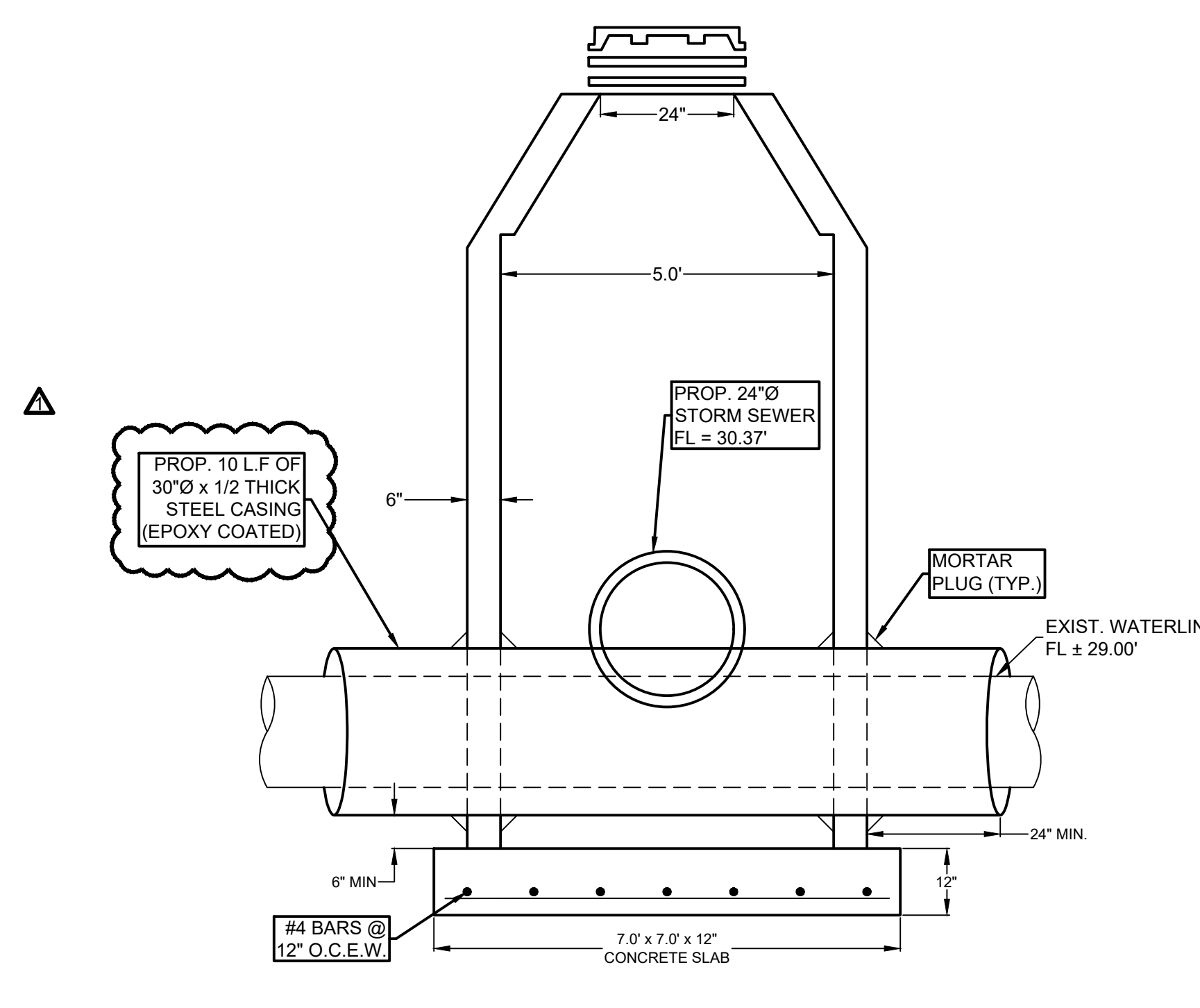
SCALE: AS SHOWN
 DRAWN BY: S.M.
 FILE: 544-021
 DATE: 08/20/2024

6
 11

PLAN VIEW
SCALE: 1" = 20'



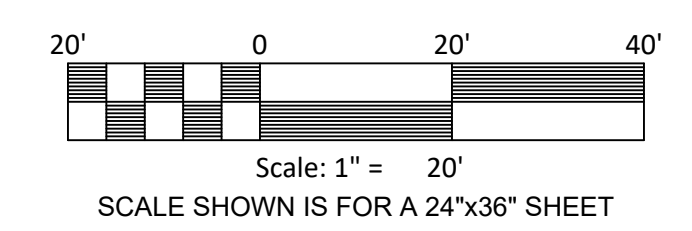
BASELINE C @ STA: 11+10.96
5.0\"/>



BASELINE C @ STA: 11+10.96
5.0\"/>

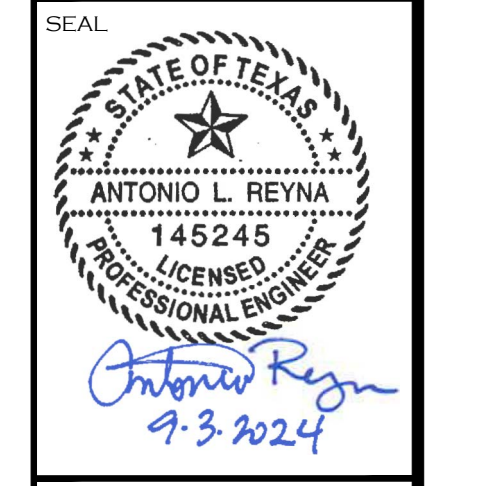
LEGEND

G	= PROP. GUTTER	EXIST. HMAC
FL	= PROP. FLOWLINE	PROP. HMAC
TOC	= PROP. TOP OF CURB	
TOG	= PROP. TOP OF GRATE	
TOP	= PROP. TOP OF PAVEMENT	
EOP	= PROP. EDGE OF PAVEMENT	
EXIST. SIGN	EXIST. FIRE HYDRANT	
EXIST. POST	EXIST. SECURITY LIGHT	
EXIST. ANCHOR	EXIST. STREET LIGHT POST	
EXIST. MAILBOX	EXIST. TRANSMISSION POLE	
EXIST. MANHOLE		
EXIST. POWER POLE	PROP. TYPE C-C INLET	
EXIST. WATER VALVE	PROP. TYPE C INLET	
EXIST. WATER METER		
TOE	EXIST. TOE	
EXIST. FENCE		
30.00	EXIST. CONTOURS	
WL	EXIST. WATERLINE	
EX SW	EXIST. 8\"/>	
EX 20W	EXIST. 20\"/>	
GB	EXIST. GRADE BREAK	
EX 12FM	EXIST. 12\"/>	
EX SS	EXIST. SANITARY SEWER	
EX 10SS	EXIST. 10\"/>	
EX 12	EXIST. 12\"/>	
SD-EX12	EXIST. 12\"/>	
SD-EX24	EXIST. 24\"/>	
SD-EX30	EXIST. 30\"/>	
SD-EX36	EXIST. 36\"/>	
IR	EXIST. IRRIGATION LINE	
SD-18	PROP. 18\"/>	
SD-24	PROP. 24\"/>	
V	PROP. VALLEY GUTTER	
GB	PROP. GRADE BREAK	
TOE	PROP. TOP OF BANK	
PROP. TOE	PROP. TOE	
PROP. SILT FENCE	PROP. SILT FENCE	



NOTES:
1. CONTRACTOR SHALL FIELD VERIFY HORIZONTAL & VERTICAL LOCATION OF ALL UTILITIES PRIOR TO CONSTRUCTION.

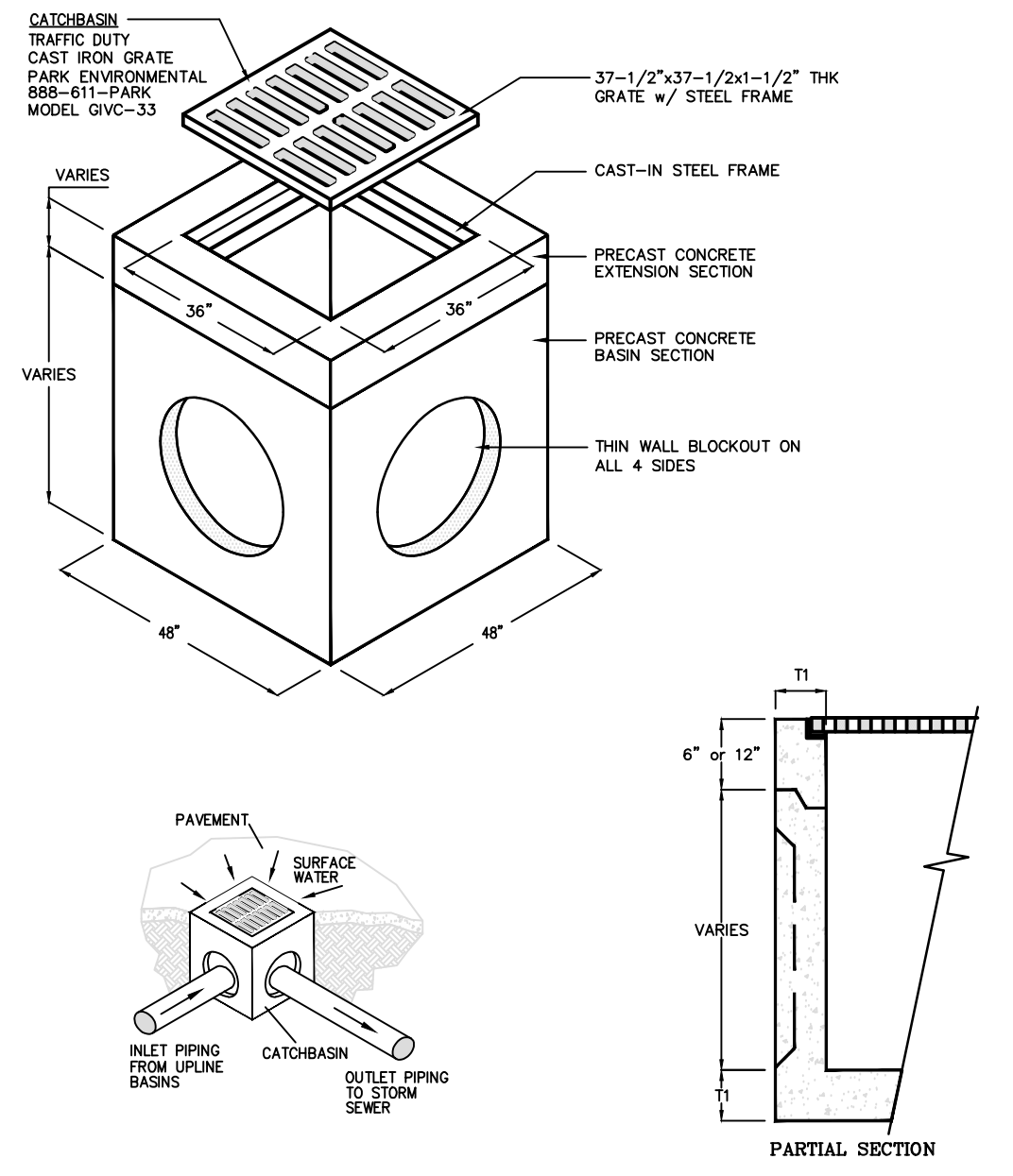
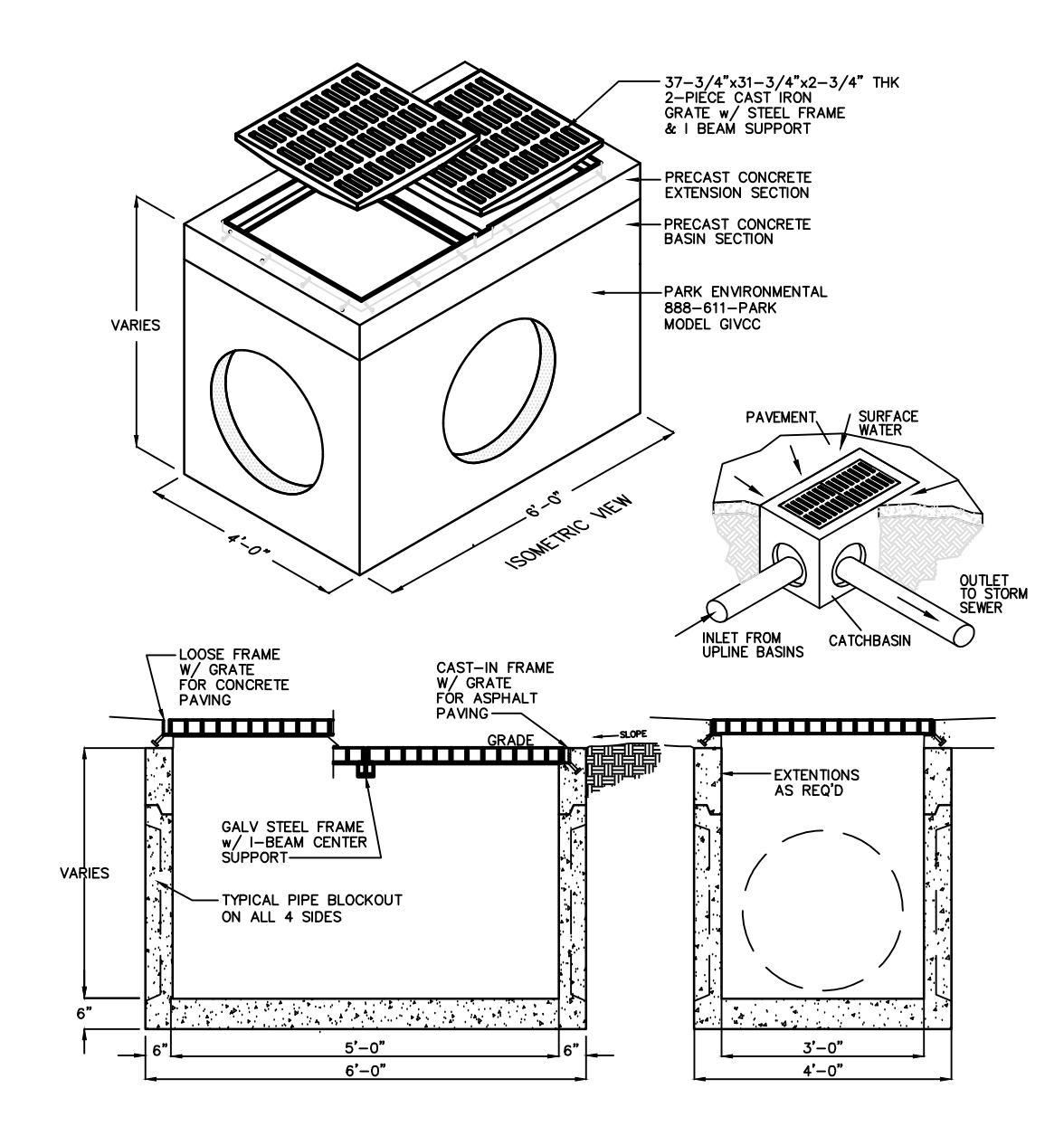
FERRIS, FLINN & MEDINA, LLC
ENGINEERS SURVEYORS
1405 N. STUART PLACE ROAD
PALM VALLEY, TEXAS 78552
P.L.C. #0000000000
TEXAS BOARD OF PROFESSIONAL ENGINEERS AND LAND SURVEYORS
FIRM REGISTRATION NO. 10037000
FIRM REGISTRATION NO. F-897



REVISIONS:
08/30/2024
ADDENDUM NO. 1
ADD CASING THICKNESS
09/03/2024
ADDENDUM NO. 2
REMOVED RIPRAP & CMP MOVED 35\"/>

HARLNGEN ECONOMIC DEVELOPMENT CORPORATION
THE PARK AT ROOSEVELT - EDA GRANT PROJECT
CONSTRUCTION PLANS
STORM SEWER PLAN AND PROFILE
BASELINE C - STA: 10+00 - 13+00

SCALE: AS SHOWN
DRAWN BY: S.M.
FILE: 544-021
DATE: 08/20/2024



MODEL #	DIMENSIONS							WEIGHT LBS
	W1	W2	H1	H2	T1	K0	GRATE	
CB38	48"	36"	42"	36"	6"	32"	38"x38"x2"	4,580

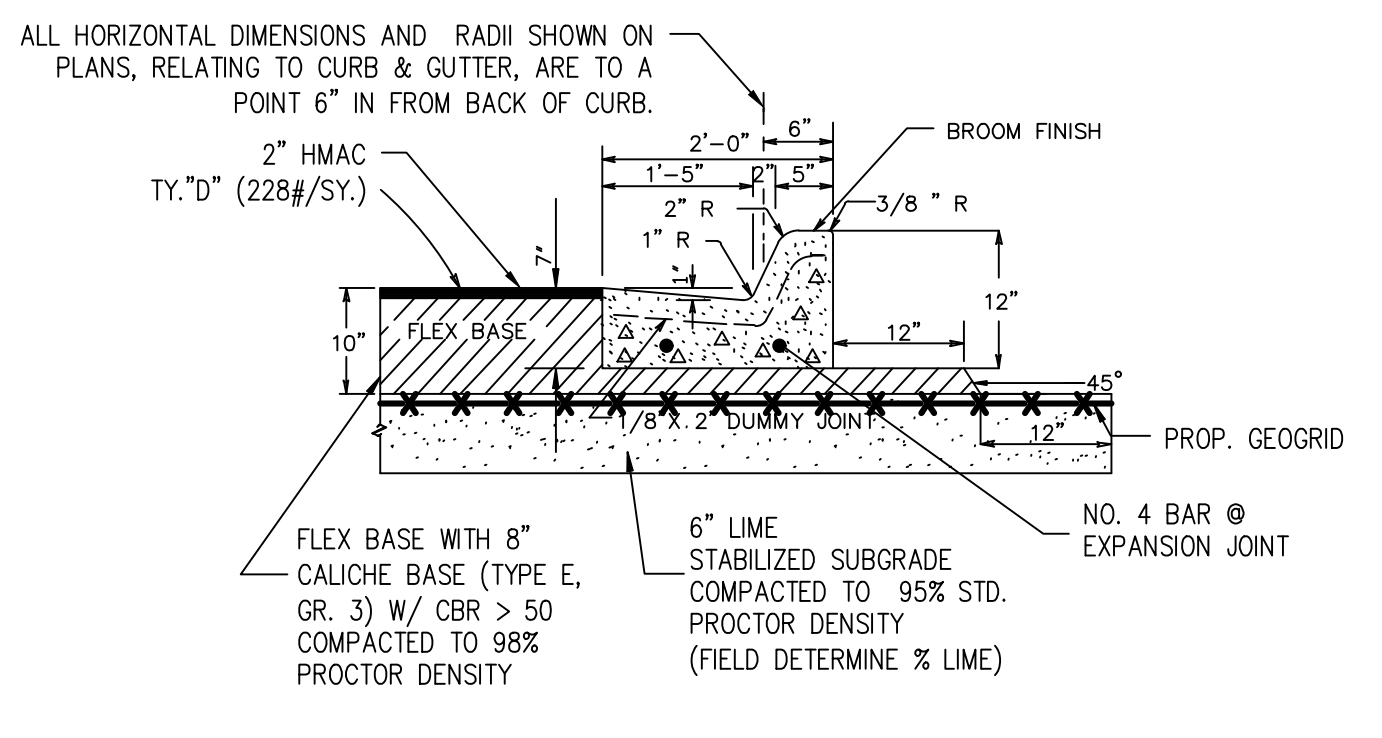
SPECIFICATIONS
CONCRETE : Class C concrete with of design strength of 3600 PSI at 28 days. Unit is of monolithic construction at floor and first stage of wall with sectional riser to required depth. Rated for HL-93 Loading.
REINFORCEMENT: Grade 60 reinforced with No. 4 steel rebar to conform to ASTM A615 on required centers or equal.
C.I. CASTINGS: Cast iron frames and grates are manufactured of grey cast iron conforming to ASTM A48-76 Class 30. Grate is traffic rated.
BACKFILL: Backfill Inlet with cement stabilizer back fill (2.5 sack/C.Y.)

TYPE "C-C" PRECAST INLET DETAIL
 SCALE: N.T.S.

SPECIFICATIONS
CONCRETE : Class C concrete with of design strength of 3600 PSI at 28 days. Unit is of monolithic construction at floor and first stage of wall with sectional riser to required depth. Rated for HL-93 Loading.
REINFORCEMENT: Grade 60 reinforced with No. 4 steel rebar to conform to ASTM A615 on required centers or equal.
C.I. CASTINGS: Cast iron frames and grates are manufactured of grey cast iron conforming to ASTM A48-76 Class 30. Grate is traffic rated.
BACKFILL: Backfill Inlet with cement stabilizer back fill (2.5 sack/C.Y.)

TYPE "C" PRECAST INLET DETAIL
 SCALE: N.T.S.

- NOTES FOR CURB DETAILS:**
- 1) EXPANSION JOINTS AT MAX. SPACING OF 30'C/C AND AT END OF CURB RETURNS AND CURB INLETS TO BE "WORK PAK" AS MANUFACTURED BY SEAL CURB PRODUCT CORP. OR EQUAL. EXPANSION JOINTS W/ A MINIMUM OF 1/2" X 1/2" ASPHALTIC SEALER
 - 2) 1/2" PRE MOLDED EXPANSION JOINT MATERIAL SHALL BE INSTALLED WHERE CONCRETE CURB AND GUTTER ABUTS CONCRETE CURB OR WHERE CONCRETE CURB AND GUTTER OR CONCRETE CURB ABUT INLETS, SIDEWALK AND/OR OTHER LOCATIONS SPECIFIED BY THE ENGINEER. MAX. SPACING = 30'. USE APPROVED POLYURETHANE SEALER BETWEEN SIDEWALK AND CURB.
 - 3) DUMMY JOINTS AND TRANSVERSE MARKINGS MADE WITH 1/8" RADIUS GROOVING TOOL SHALL BE PROVIDED ON 10' CENTERS.
 - 4) PROVIDE TWO NO 4 X 3' DOWELS AT EACH EXPANSION JOINT. ONE END SHALL BE GREASED AND WRAPPED WITH FELT. LAY DOWELS PARALLEL WITH CURB.
 - 5) TERMINATE ASPHALT 1/2" ABOVE TOP OF CURB AT BOTTOM OF SLOPE AND FLUSH AT TOP OF SLOPE
 - 6) CURB DUMMY JOINTS AND EXPANSION JOINTS SHALL COINCIDE WITH SIDEWALK JOINTS WHERE CURB IS ADJACENT TO SIDEWALK.
- STANDARD CURB AND GUTTER SECTION**

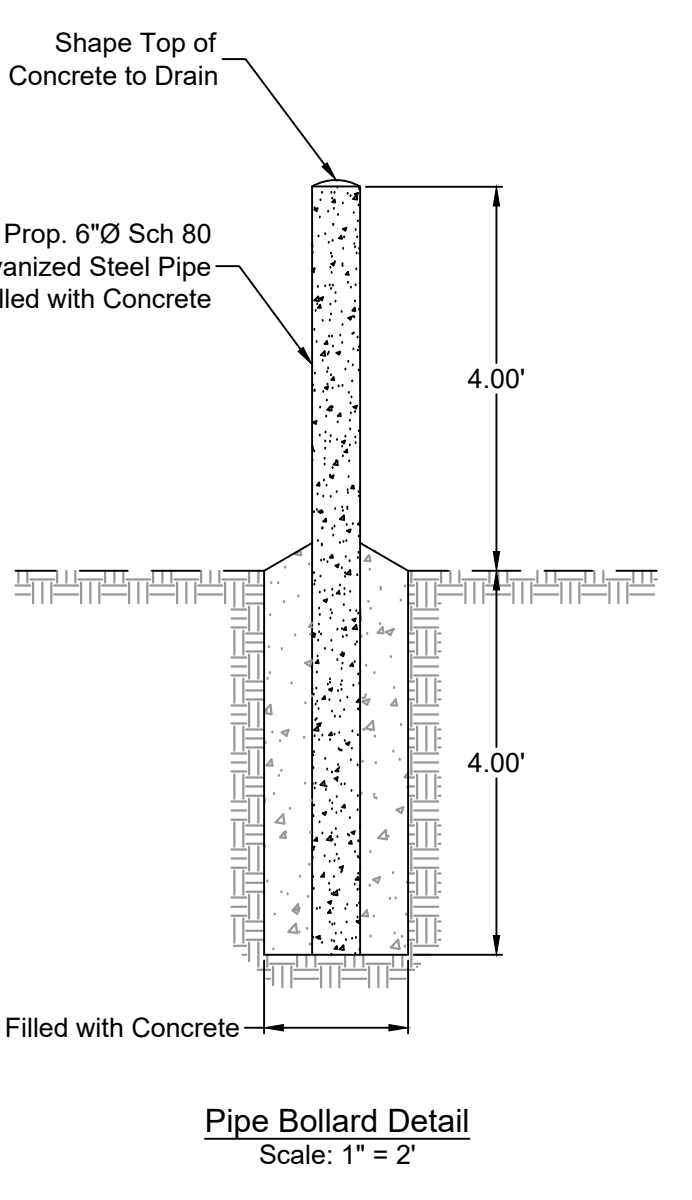


TYPICAL CONC. CURB & GUTTER TY "A" (BARRIER)

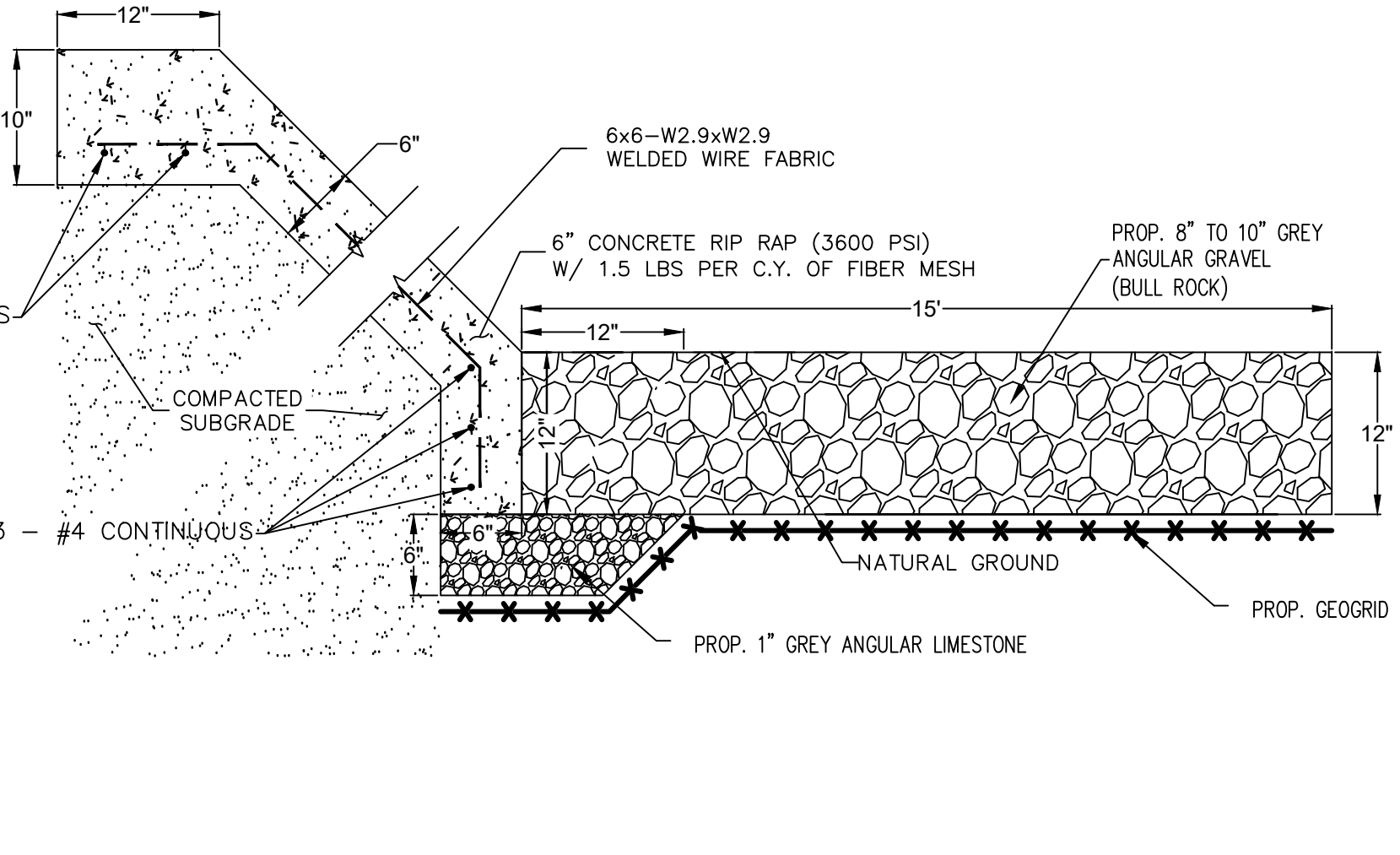
NOTE: EXPANSION JOINTS
 1/2" PREMOLDED EXPANSION JOINT MATERIAL SHALL BE INSTALLED WHERE CONC. CURB & GUTTER ABUTS CONC. CURB, OR WHERE CONC. CURB & GUTTER OR CONC. CURB ABUT INLETS, BRIDGE WINGWALLS, BRIDGE ABUTMENTS AND/OR ANY OTHER LOCATIONS SPECIFIED BY THE ENGINEER. MAX. SPACING = 30' DUMMY JOINTS ARE AT EVERY 10 FT.



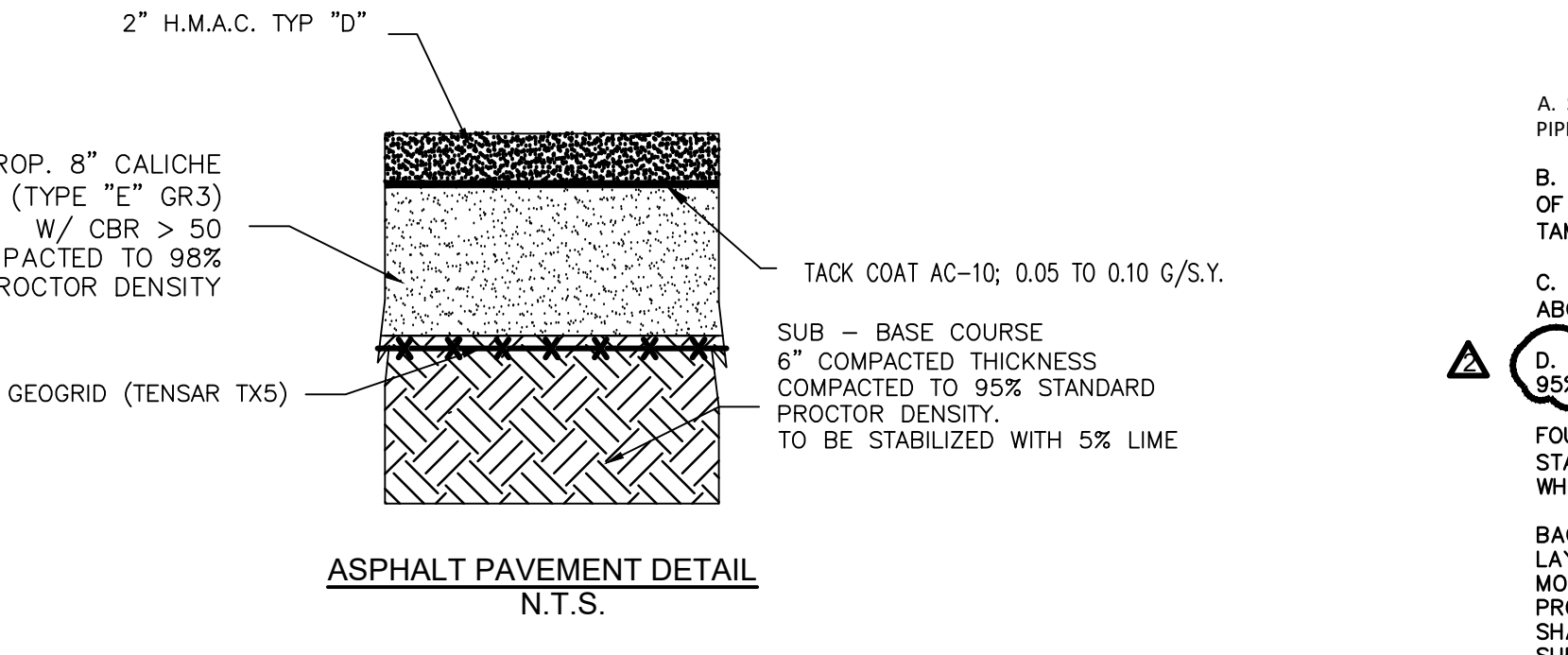
ASPHALT PAVEMENT DETAIL
 N.T.S.



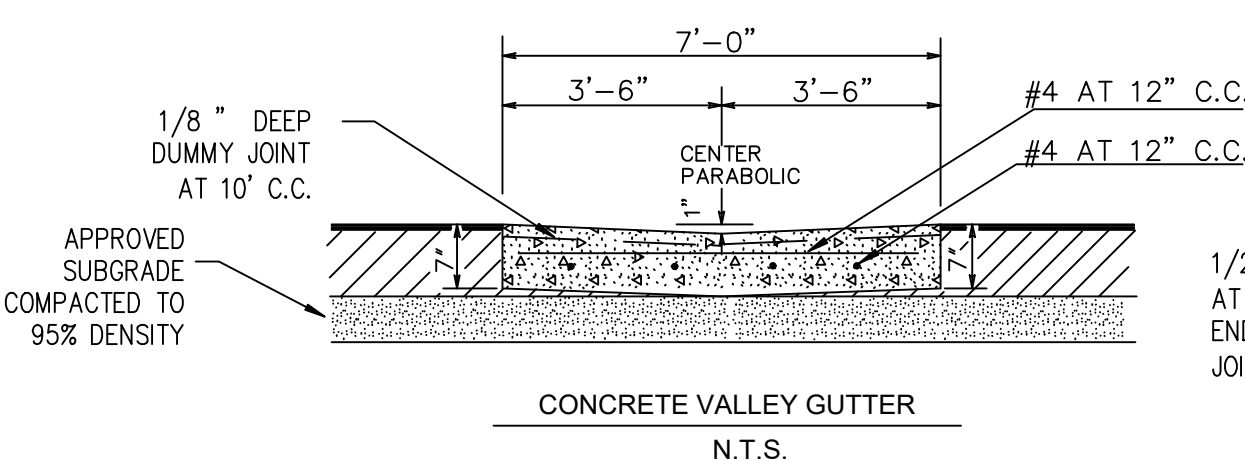
Pipe Bollard Detail
 Scale: 1" = 2'



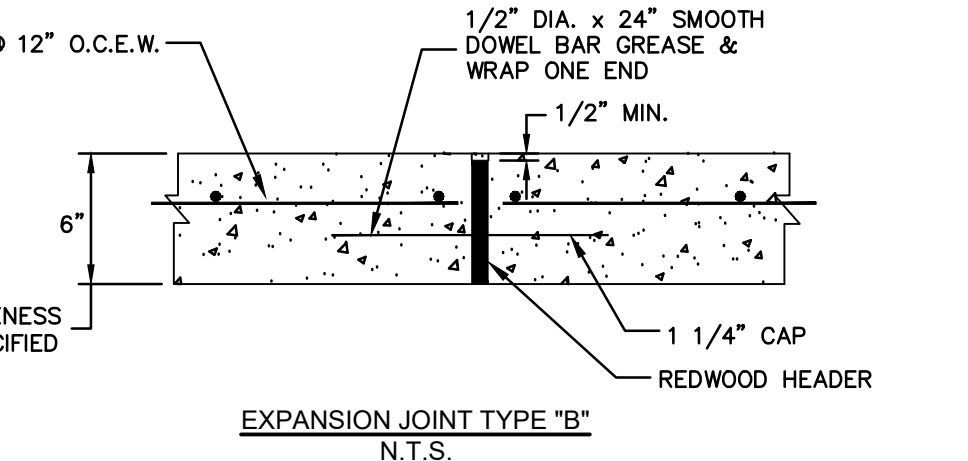
CONCRETE RIP RAP & TOE WALL DETAIL
 N.T.S.



ASPHALT PAVEMENT DETAIL
 N.T.S.



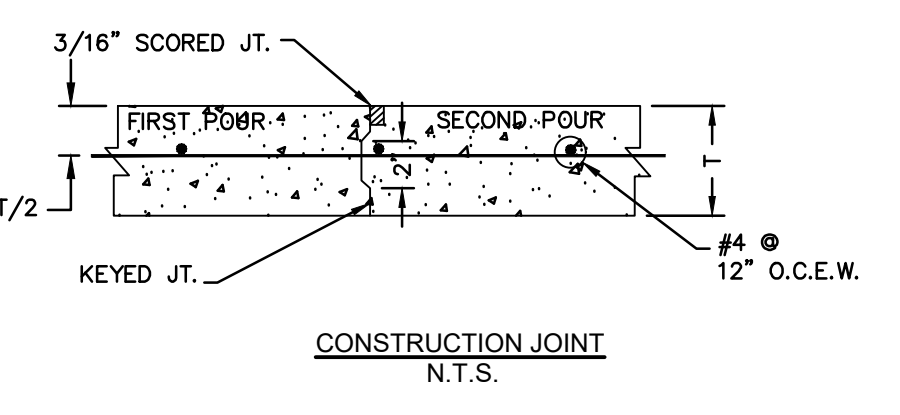
CONCRETE VALLEY GUTTER
 N.T.S.



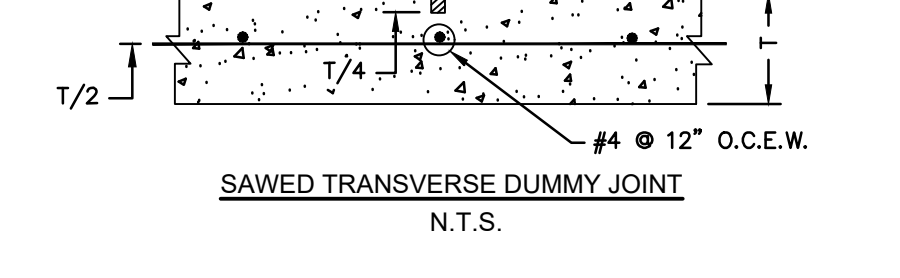
EXPANSION JOINT TYPE "B"
 N.T.S.

CONCRETE SHALL BE CLASS "C" W/ 1.5 LBS PER C.Y. OF FIBER MESH W/ A 3600 P.S.I. MIN. COMPRESSIVE STRENGTH @ 28 DAYS. CURBS SHALL BE BACK FILLED IMMEDIATELY AFTER REMOVAL OF FORMS TO PREVENT TILTING. 2" DUMMY JOINTS @ 10' O.C. MAX.

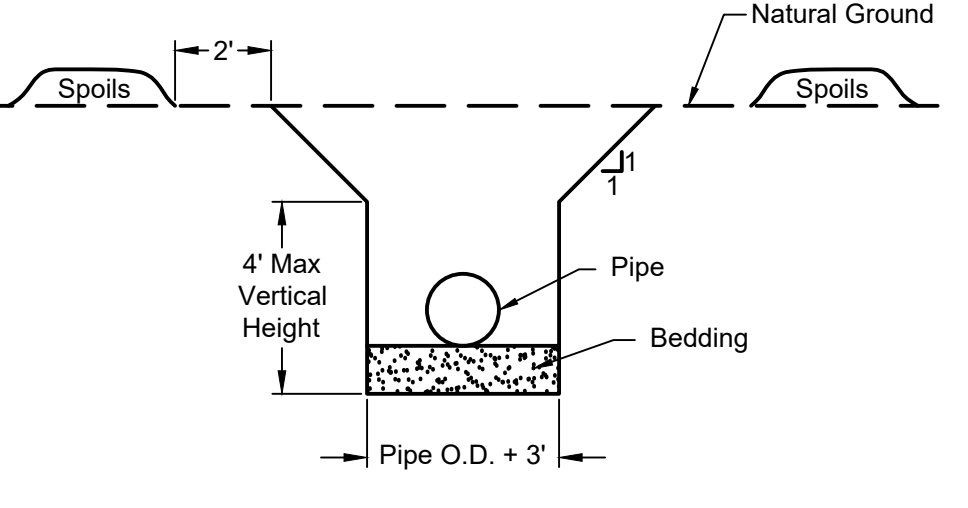
EXPANSION JOINTS
 EXPANSION JOINTS WILL BE PLACED @ CURB RETURNS, INLETS & AT THE END OF EACH POUR W/ INTERVALS NOT TO EXCEED 30' C-C. JOINTS WILL CONSIST OF 1/2" PRE-MOLDED BITUMINOUS EXPANSION JOINT MATERIAL W/ 3-36" X 1/2" DOWELS, ONE END GREASED & WRAPPED. CARE MUST BE TAKEN THAT THE DOWELS ARE STRAIGHT AND LAID PARALLEL W/ CURB & NO CONCRETE "PLUGS" OR OTHER MATERIAL BE ALLOWED THROUGH THE DOWEL HOLES OR EXPANSION MATERIAL THAT WOULD PREVENT JOINT FROM OPERATING AS AN EXPANSION JOINT.



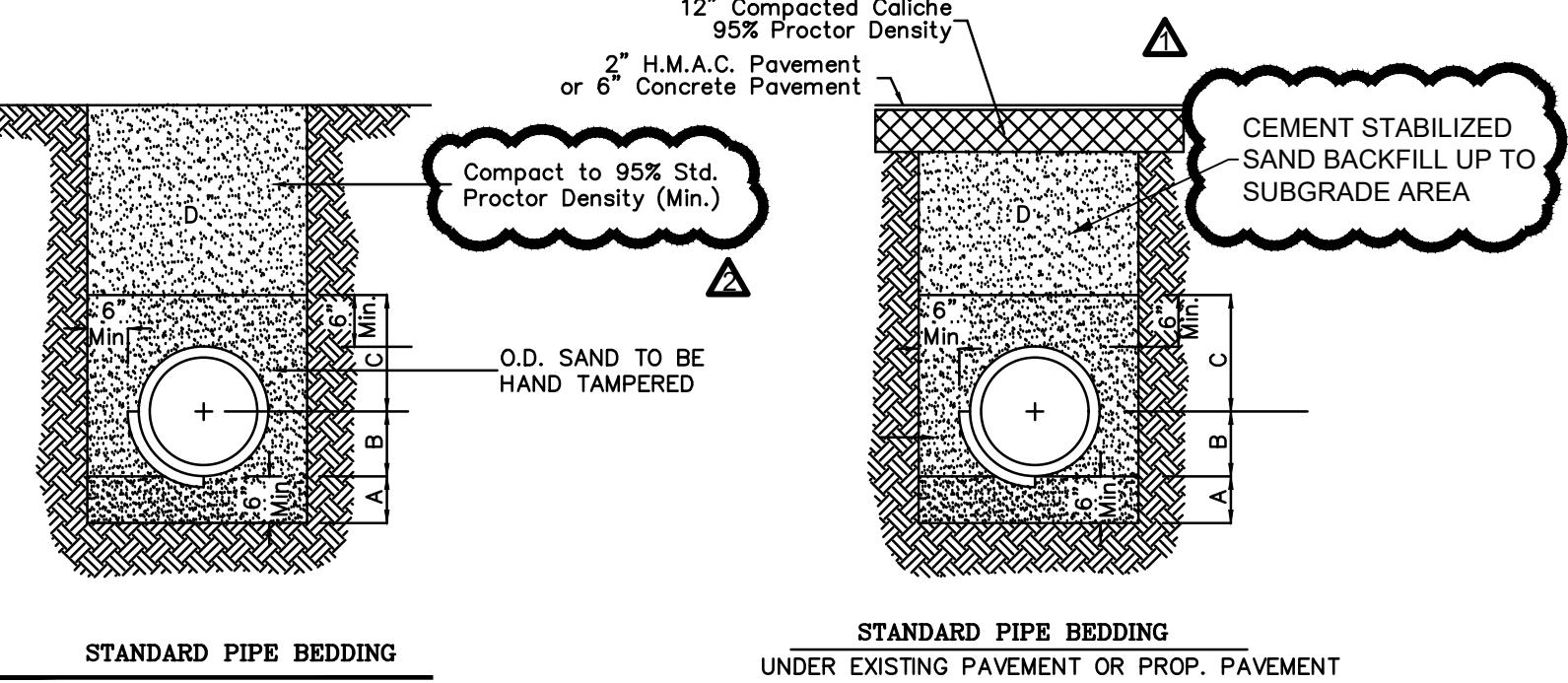
CONSTRUCTION JOINT
 N.T.S.



SAWED TRANSVERSE DUMMY JOINT
 N.T.S.



Trench Safety Detail
 Note: Trenches shall be sloped as shown
 Scale: N.T.S.



- A. SAND BEDDING TO BE PLACED BEFORE PIPE IS LAID UP TO FLOW LINE OF PIPE (MIN. THICKNESS = 6")
 - B. SAND BACKFILL PLACED AFTER PIPE IS LAID FROM BOTTOM OF PIPE TO SPRING LINE OF PIPE. (4" LIFTS, CAPS, HAND TAMPED)
 - C. SAND BACKFILL PLACED FROM SPRING LINE OF PIPE TO 6" ABOVE TOP OF PIPE. (6" LIFTS, HAND TAMPED)
 - D. FILL TRENCH W/ SELECT BACKFILL, W/ 8" LIFTS COMPACT TO 95% STD. PROCTOR
- FOUNDATION PREPARATION (WELLPOINTS, GRAVEL OR CEMENT STABILIZATION, OR APPROVED SUBSTITUTE) SHALL BE REQUIRED WHEN TRENCH BOTTOM IS UNSTABLE.
- BACKFILLING AT STRUCTURES SHALL BE PLACED IN UNIFORM LAYERS, MOISTENED AS REQUIRED TO APPROXIMATE OPTIMUM MOISTURE CONTENTS AND COMPACTED TO 95% STANDARD PROCTOR DENSITY. THE THICKNESS OF EACH LOOSE LAYER SHALL BE SAND, APPROVED SITE SOIL OR OTHER APPROVED SUBSTITUTE.
- WATER LINE - BACKFILL A,B,D
 SEWER LINE - BACKFILL A,B,C,D
 SAND TO BE ARROYO SAND W/ PI <15

FERRIS, FLINN & MEDINA, LLC
ENGINEERS SURVEYORS
 1405 N. STUART PLACE ROAD
 PALM VALLEY, TEXAS 78552
 P.O. BOX 100000
 TEXAS BOARD OF PROFESSIONAL ENGINEERS AND LAND SURVEYORS
 FIRM REGISTRATION NO. 100370-00 FIRM REGISTRATION NO. F-897

SEAL
 STATE OF TEXAS
 ANTONIO L. REYNA
 LICENSED PROFESSIONAL ENGINEER
 145245
 9.3.2024

REVISIONS:
 08/30/2024
 ADDENDUM NO. 1
 ADD STABILIZED SAND BACKFILL NOTE
 09/03/2024
 ADDENDUM NO. 2
 BACKFILL SPECIFICATION ADDED.

HARLINGEN ECONOMIC DEVELOPMENT CORPORATION
 THE PARK AT ROOSEVELT - EDA GRANT PROJECT
 CONSTRUCTION PLANS
 GENERAL DETAILS

SCALE: AS SHOWN
 DRAWN BY: S.M.
 FILE: 544-021
 DATE: 08/20/2024

10
 11